

**Solvency and Financial Condition Report (“SFCR”)
For the year ending December 31, 2020.**

Renaissance Reinsurance of Europe

NOTE ON FORWARD-LOOKING STATEMENTS

This SFCR for the year ended December 31, 2020 of Renaissance Reinsurance of Europe contains forward-looking statements. Forward-looking statements are necessarily based on estimates and assumptions that are inherently subject to significant business, economic and competitive uncertainties and contingencies, many of which, with respect to future business decisions, are subject to change. These uncertainties and contingencies can affect actual results and could cause actual results to differ materially from those expressed in any forward-looking statements made by, or on behalf of, us. In particular, statements using words such as “may”, “should”, “estimate”, “expect”, “anticipate”, “intend”, “believe”, “predict”, “potential”, or words of similar import generally involve forward-looking statements. For example, we may include certain forward-looking statements in the discussion and analysis of our financial condition and results of operations with regard to trends in results, prices, volumes, operations, investment results, margins, combined ratios, fees, reserves, market conditions, risk management and exchange rates. This SFCR also contains forward-looking statements with respect to our business and industry, such as those in relation to our strategy and management objectives, market standing and product volumes, competition and new entrants in our industry, industry capital, insured losses and regulatory matters affecting the reinsurance and insurance industries.

The inclusion of forward-looking statements in this report should not be considered as a representation by us or any other person that our current objectives or plans will be achieved. Numerous factors could cause our actual results to differ materially from those addressed by the forward-looking statements, including the following:

- the frequency and severity of catastrophic and other events we cover;
- the effectiveness of our claims and claim expense reserving process;
- our ability to maintain our financial strength ratings;
- the effect of climate change on our business;
- the effects of United States (“U.S.”) business tax reform proposals;
- adverse tax developments, including potential changes to the taxation of inter-company or related party transactions;
- the effect of emerging claims and coverage issues;
- changes in underwriting market conditions;
- our reliance on a small and decreasing number of reinsurance brokers and other distribution services for the preponderance of our revenue;
- our exposure to credit loss from counterparties in the normal course of business;
- the effect of continued challenging economic conditions throughout the world;
- a contention by the Internal Revenue Service (the “IRS”) that Renaissance Reinsurance Ltd. (“Renaissance Reinsurance”), or any of its other Bermuda subsidiaries, is subject to taxation in the U.S.;
- the performance of our investment portfolio;
- losses we could face from terrorism, political unrest or war;
- the effect of cybersecurity risks, including technology breaches or failure, on our business;

- our ability to successfully implement our business strategies and initiatives;
- our ability to retain our key senior officers and to attract or retain the senior management and employees necessary to manage our business;
- our ability to determine the impairments taken on our investments;
- the availability of retrocessional reinsurance on acceptable terms; and
- the effects of Brexit.

Contents

NOTE ON FORWARD-LOOKING STATEMENTS	2
1. EXECUTIVE SUMMARY.....	7
2. BUSINESS AND PERFORMANCE	7
2.1. COMPANY STRUCTURE	7
2.1.1. Company Address.....	7
2.1.2. Company Position Within the Group.....	7
2.1.3. Supervisory Authority.....	8
2.1.4. Group Supervisor.....	8
2.2. EXTERNAL AUDITOR.....	8
2.3. INSURANCE BUSINESS WRITTEN DURING THE PERIOD	9
2.3.1. Overall Performance	9
2.3.2. By Business Segment	9
2.3.3. By Geographical Region.....	10
2.4. INVESTMENT PERFORMANCE	11
2.4.1. Carrying Value	11
2.4.2. Net Investment Income	11
2.4.3. Overall Investment Performance	11
2.4.4. Investments in Securitisation	11
2.5. OTHER MATERIAL INCOME AND EXPENSES	12
2.6. SIGNIFICANT EVENTS.....	12
2.7. CORONA VIRUS COVID-19	12
3. SYSTEM OF GOVERNANCE	13
3.1. BOARD STRUCTURE	13
3.1.1. Composition of the Board	13
3.1.2. Board Committee Structure	14
3.1.3. Segregation of Responsibilities	14
3.1.4. Remuneration Policy	15
3.1.5. Transactions with Related Parties	16
3.2. FIT AND PROPER REQUIREMENTS	16
3.2.1. Board of Directors	16
3.2.2. Senior Management	18
3.3. RISK MANAGEMENT SYSTEM	19
3.3.1. Risk Management Framework	19
3.3.2. Risk Management Function.....	22
3.4. ORSA.....	23
3.4.1. ORSA Process.....	23
3.4.2. Review and Approval of ORSA.....	24
3.4.3. Assessment of Solvency Requirements	25
3.5. INTERNAL CONTROL SYSTEM	25
3.5.1. Code of Ethics	25
3.5.2. Control Framework	25
3.5.3. Compliance Function	25

3.6.	INTERNAL AUDIT	26
3.6.1.	Internal Audit Function.....	26
3.6.2.	Independence of Internal Audit Function	27
3.7.	ACTUARIAL FUNCTION.....	27
3.8.	OUTSOURCING	27
3.9.	MATERIAL CHANGES IN SYSTEM OF GOVERNANCE	28
3.10.	ADEQUACY OF SYSTEM OF GOVERNANCE	28
4.	RISK PROFILE	29
4.1.	RISK PROFILE.....	29
4.1.1.	Underwriting Risk	30
4.1.2.	Reserve Risk.....	30
4.1.3.	Market Risk.....	30
4.1.4.	Credit Risk.....	31
4.1.5.	Liquidity Risk.....	31
4.1.6.	Operational Risk	31
4.2.	RISK EXPOSURE.....	32
4.3.	MATERIAL RISK CONCENTRATIONS	32
4.4.	MITIGATION OF RISKS	32
4.5.	INVESTMENT OF ASSETS	33
4.6.	STRESS TESTING AND SENSITIVITY ANALYSIS	35
5.	SOLVENCY VALUATION	36
5.1.	ASSET VALUATION.....	36
5.1.1.	Asset Valuation - Solvency II versus Statutory Financial Statements	36
5.2.	TECHNICAL PROVISIONS.....	38
5.2.1.	Valuation of Technical Provisions.....	38
5.2.2.	Uncertainty in Valuing Technical Provisions.....	41
5.2.3.	Valuation Bases - Solvency II Versus Statutory Financial Statements	44
5.2.4.	Elective Adjustments Permitted by Directive 2009/138/EC.....	44
5.2.5.	Other Material Information.....	45
5.3.	VALUATION OF OTHER LIABILITIES	45
5.3.1.	Valuation Bases - Solvency II versus Statutory Financial Statements.....	45
6.	CAPITAL MANAGEMENT	47
6.1.	OWN FUNDS.....	47
6.1.1.	Management of Own Funds	47
6.1.2.	Own Funds Position.....	47
6.1.3.	Own Funds Eligible to Cover SCR	48
6.1.4.	Own Funds Eligible to Cover MCR	49
6.1.5.	Reconciliation of Equity from Statutory Financial Statements to Solvency II	49
6.2.	CAPITAL REQUIREMENTS	49
6.2.1.	Solvency Capital Requirement.....	49
6.2.2.	Minimum Capital Requirement	50
6.2.3.	Use of Simplified Calculations	51
6.2.4.	Use of Elective Parameters.....	51
6.2.5.	Inputs to MCR.....	51

6.2.6. Material Changes to SCR 53

6.3. INTERNAL MODEL 53

6.4. NON-COMPLIANCE..... 53

APPENDIX ONE 54

COMPANY POSITION WITHIN RENAISSANCERE GROUP 54

APPENDIX TWO 55

DISCLOSURE QRTS 55

1. EXECUTIVE SUMMARY

The purpose of this report is to satisfy the public disclosure requirements under the Solvency II Directive which was transposed into Irish Law as the European Union (Insurance and Reinsurance Regulations) (S.I. No. 485 of 2015) with effect from 1 January 2016.

This report is required to be submitted to Central Bank of Ireland (“CBI” or “the Authority”) and made publicly available annually. The report discusses the structure of the business operations, corporate governance framework, and the solvency and financial performance of Renaissance Reinsurance of Europe. The information contained herein supports the Annual Quantitative Reporting Templates (“QRTs”).

Unless otherwise stipulated, values in this report are disclosed in U.S. Dollar.

2. BUSINESS AND PERFORMANCE

2.1. COMPANY STRUCTURE

Renaissance Reinsurance of Europe (the “Company”) was incorporated under the laws of Ireland in 1998. The Company is an unlimited liability company, regulated by the CBI. The Company is ultimately 100% owned by RenaissanceRe Holdings Ltd (“RenaissanceRe”), a Bermuda-domiciled holding company.

The Company predominantly provides property catastrophe reinsurance and specialty reinsurance coverage to insurers and reinsurers, primarily in Europe. Business is written both through the Company’s headquarters in Dublin and its branch office in the United Kingdom.

2.1.1. Company Address

Street Address: 4th and 5th Floors
Hardwicke House
Upper Hatch Street
Dublin 2, Ireland

Website: <https://www.renre.com/renaissance-reinsurance-of-europe/>

2.1.2. Company Position Within the Group

The Company is a majority-owned subsidiary of Renaissance Reinsurance Ltd. (“Renaissance Reinsurance”), a Class 4 Bermuda-licensed insurer, and a minority-owned subsidiary of RenaissanceRe. Renaissance Reinsurance is ultimately owned 100% by RenaissanceRe. In this report, references to the “RenaissanceRe Group” or “we” refers to RenaissanceRe and its subsidiaries, which include the Company and Renaissance Reinsurance.

Refer to Appendix One for a simplified group structure demonstrating the Company's position in the RenaissanceRe Group.

2.1.3. Supervisory Authority

The Company is regulated by Central Bank of Ireland. Contact details for the Authority are as follows:

Name:	Central Bank of Ireland
Jurisdiction:	Ireland
Address:	New Wapping Street North Wall Quay Dublin 1
Email Address:	insurance@centralbank.ie
Phone Number:	+353 (0)1 224 4000

2.1.4. Group Supervisor

The Bermuda Monetary Authority is designated as the group supervisor of the RenaissanceRe Group. The contact details for the Group Supervisor are as follows:

Name:	Bermuda Monetary Authority
Jurisdiction:	Bermuda
Address:	BMA House 43 Victoria Street Hamilton
Email Address:	insuranceinfo@bma.bm
Phone Number:	+1441 295 5278

2.2. EXTERNAL AUDITOR

Organization:	EY
Jurisdiction:	Ireland
Address:	EY Building, Harcourt Centre Harcourt Street Dublin 2
Phone Number:	+353 1 4750555

2.3. INSURANCE BUSINESS WRITTEN DURING THE PERIOD

2.3.1. Overall GAAP Performance

As the table below shows, the Company's net premiums earned for the financial year are minimal as no deals were written during 2020, with only minor adjustments being made to existing deals. The Company continues to cede a significant proportion of gross written premium via internal quota shares within RenaissanceRe Group.

The loss experienced in 2020 is driven by operating expenses, which are offset by investment return, with minimal impact from insurance activities. Given the low premiums/claims relative to operating expenses, the usual insurance ratios are not credible given the denominator is close to zero.

	2020	2019
	\$'000	\$'000
Gross premiums written	(106)	1,808
Net premiums written	(21)	128
Net premiums earned	4	93
Net claims paid	7	81
Change in net claims provisions	(9)	(84)
Net operating expenses	(978)	(841)
Investment return	522	300
Foreign exchange gains/(losses)	48	(39)
Profit/(Loss) for the financial year	(402)	(484)

2.3.2. By Business Segment

An analysis of the underwriting result before investment returns by main class of business is set out below for the previous two years:

	Gross premiums written \$'000	Gross premiums earned \$'000	Gross claims incurred \$'000	Gross operating expenses \$'000	Reinsurance balance \$'000	Total \$'000
2020						
Property Catastrophe	11	11	—	(29)	(8)	(26)
Property Other	—	—	—	—	—	—
Specialty - Credit	(100)	389	(119)	(1,109)	(84)	(923)
Specialty - Other	(17)	(17)	—	—	—	(17)
	(106)	383	(119)	(1,138)	(92)	(966)

	Gross premiums written \$'000	Gross premiums earned \$'000	Gross claims incurred \$'000	Gross operating expenses \$'000	Reinsurance balance \$'000	Total \$'000
2019						
Property Catastrophe	713	713	—	(671)	(506)	(464)
Property Other	2	2	12	(6)	(13)	(5)
Specialty - Credit	1,093	366	(5)	(405)	(232)	(276)
	<u>1,808</u>	<u>1,081</u>	<u>7</u>	<u>(1,082)</u>	<u>(751)</u>	<u>(745)</u>

The reinsurance balance is the aggregate total of all those items included in the technical account which relate to reinsurance outward transactions.

2.3.3. By Geographical Region

The geographical analysis of gross premiums written for the Company by destination (or by situs of the risk) is as follows:

	2020 \$'000	2019 \$'000
Other EU countries	10	736
Other Non-EU countries	<u>(116)</u>	<u>1,072</u>
	<u>(106)</u>	<u>1,808</u>

As seen above only premium adjustments to existing deals were made during 2020, which resulted in negative movements in the overall Gross premium written.

2.4. INVESTMENT PERFORMANCE

2.4.1. Carrying Value

As permitted by FRS 102, the Company has elected to apply the recognition and measurement provisions of IAS 39 – Financial Instruments (as adopted for use in the EU) to account for all its financial instruments. In general, financial assets are classified at fair value through profit or loss as the Company’s investment strategy is to manage financial investments acquired on a fair value basis.

As indicated in the table below, the Company's investment portfolio remains conservative with respect to interest rate, credit and duration risk, with 100% allocated to fixed maturity and short-term investments with a high degree of liquidity and modest credit exposure. Specifically, the investments held include U.S. treasuries, regional governments, local authorities and cash.

	2020	2019
	\$'000	\$'000
Short term investments	1,204	111
Fixed Income securities	10,737	11,258
	<u>11,941</u>	<u>11,369</u>

2.4.2. Net Investment Income

The analysis of net investment income by calendar year is as follows:

	Income	Net realized gains and losses	Net unrealized gains and losses	Total
	\$000	\$000	\$000	\$000
2020	142	279	101	522
2019	250	43	7	300

2.4.3. Overall Investment Performance

The duration of the Company’s investment portfolio remains relatively short and is consistent with prior years. The overall investment return over 2020 was 4.6% (compared to 2.6% in 2019).

2.4.4. Investments in Securitisation

The Company does not have any investments in securitized products.

2.5. OTHER MATERIAL INCOME AND EXPENSES

Material sources of income and expenditure for the Company relates to underwriting and investments as described in detail in sections 2.3 and 2.4 above.

2.6. SIGNIFICANT EVENTS

The Company has not experienced any significant events impacting operations during the reporting period.

2.7. CORONA VIRUS (COVID-19)

COVID-19, with its infections, lockdowns, and economic disruption continues to be a global shared experience that will have a long-lasting impact on the insurance industry. To-date, COVID-19 has not had a material impact on the financial and solvency position of the Company. EIOPA classified this as a “major development” as referred to in article 54(1) of Solvency II. However, the Company does not consider the impacts of COVID-19 to significantly affect the relevance of the information contained in this report, as at 31 December 2020.

Operational Risk

Operationally, the pandemic continues to test us and take a personal toll on employees. Increased focus has been made on enabling the IT infrastructure for the continued work-from-home situation across our European platform, as well as managing the increased prevalence of associated risks (e.g. Cyber). Although more challenging than normal, the Company has been able to carry out business activities with relatively low levels of disruption.

Underwriting & Market Risk

The financial impacts of COVID-19 for the Company have been assessed over 2020, however there has been limited direct impact on the overall performance over the year, given the limited underwriting exposure during 2020, while investment returns over the year were greater than expected due to the reduction in interest rates on the fixed income portfolio.

3. SYSTEM OF GOVERNANCE

The Company adheres to the requirements as set by the CBI for the promotion of strong and effective governance, including the composition of its Board, the appointment of Board members, and the role and responsibilities of the Board and its sub-committees.

The Company is subject to the CBI’s “Corporate Governance Requirements for Insurance Undertakings 2015” and is currently deemed to be a “low impact” undertaking as defined within the Requirements and under CBI’s Probability Risk Impact System (“PRISM”).

3.1. BOARD STRUCTURE

The Company’s Board of Directors (the “Board”) is responsible for setting and overseeing the business strategy, including establishing a risk appetite for the Company. Among other things, key responsibilities of the Board include:

- Obtaining comfort that there is in place a framework of prudent and effective controls which enables risk to be assessed and managed throughout the Company;
- To support the development of the Company’s strategy having due regard to the overall strategy of the RenaissanceRe Group and be satisfied that the agreed strategy is appropriately executed;
- Review, challenge and approval of the Own Risk and Solvency Assessment (“ORSA”) process;
- Satisfaction with the integrity of financial information and that financial controls are robust and defensible;
- Oversee the Company’s processes and framework to ensure compliance with its regulatory and legal obligations.

The Board relies upon senior management to have effective oversight of the application of Board policy, including relying on the Chief Executive Officer (“CEO”) and Chief Risk Officer (“CRO”) to monitor actual performance against the risk appetite set by the Board. The CEO and CRO are responsible for ensuring that the risk appetite remains appropriate, recommending any changes to the Board for their review and approval, as necessary.

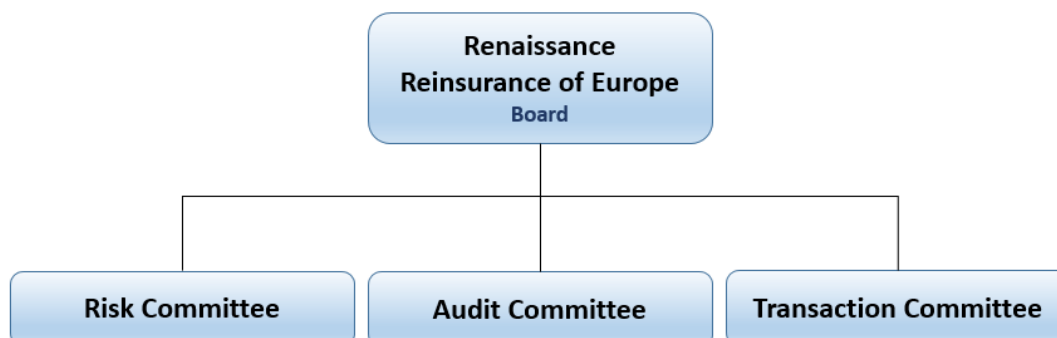
3.1.1. Composition of the Board

The Company’s Board composition is made of a balance of executive directors and independent non-executive directors in line with the requirements set by CBI. The current Board members and their respective roles are as follows:

Name	Role
Adrian Wrafter	Independent non-executive director- Board Chair
Seamus Creedon	Independent non-executive director- Risk Committee Chair
Kieran Kerr	Independent non-executive director- Audit Committee Chair
Ian Branagan	Executive director
Sean Brosnan	Executive director
Orla Finnan	Chief Executive Officer

3.1.2. Board Committee Structure

The Board maintains three standing Committees: The Risk Committee; Audit Committee; and Transaction Committee.



3.1.2.1. Risk Committee

The objective of the Risk Committee is to assist the Board in overseeing the activities of the Company with respect to the current risk exposures of the Company, its future risk strategy and to ensure that the Company maintains a sufficient level of capital to cover its risks.

3.1.2.2. Audit Committee

The Audit Committee is charged with responsibility for, among other things, the appointment of external auditor; review of any audit management letters issued; monitoring external audit expenditure; monitoring the effectiveness, independence and performance of the internal audit function; review and approval of the internal audit plan; review of internal audit reports and action taken to address any recommendations; review the integrity of the Company's financial statements and ensure that they give a "true and fair view" of its financial status.

3.1.2.3. Transaction Committee

The role of the Transaction Committee is to consider all significant underwriting transactions and reach a decision on whether or not to grant approval. The Transaction Committee will report to the Board on each transaction that is reviewed.

3.1.3. Segregation of Responsibilities

The responsibilities of the Board are appropriately segregated according to their roles as described in 3.1.1.

The Risk and Audit Committees are responsible, respectively, for reporting to the Board on the Company's risk profile and risk tolerance limits, and the adequacy of the internal control environment that exists to manage the risks. The Company also has a Transaction Committee

which is responsible for the consideration of significant underwriting transactions and reaching a decision on whether or not to grant approval. The Transaction Committee reports to the Board on each transaction that is reviewed.

The Board, and each of its sub-committees, have documented charters which outline their roles and responsibilities, composition, and meeting requirements.

RenaissanceRe, the ultimate holding company of the RenaissanceRe Group, is a publicly traded company with traded securities on the New York Stock Exchange (ticker: RNR) and hence the Company is subject to the governance and securities laws prescribed by the U.S. Securities and Exchange Commission (the "SEC").

3.1.4. Remuneration Policy

Remuneration policy is set at the RenaissanceRe Group level and is applicable to all Group entities. RenaissanceRe's compensation structure is overseen by the Group's Compensation Committee. Senior management from the risk, compliance, administrative, and finance functions of the RenaissanceRe Group, as well as the Group Board of Directors and external compensation consultants, are involved in the review of RenaissanceRe's compensation structure. This structure is applied to all RenaissanceRe entities, including the Company. The process includes executive sessions between the Compensation Committee of the RenaissanceRe Board and, as the Compensation Committee sees fit, members of management, which include representatives from the risk, administrative, legal, accounting and internal audit functions.

The key principles of the RenaissanceRe executive compensation philosophy include:

- Aligning the interests of executives with the long-term interests of shareholders;
- Encouraging operational and financial consistency over the market cycles and earnings volatility that characterizes our industry; and
- Promoting a team-based approach.

We give effect to these principles by:

- Requiring named executive officers to own a significant number of shares and forbidding pledging, hedging and similar transactions in RenaissanceRe shares;
- Making a meaningful portion of pay at risk through our performance-based annual incentive bonus and our long-term equity program; and
- Rewarding executive officers primarily on the Group's overall performance rather than the performance of individual business units or functions.

The Compensation Committee establishes and oversees the RenaissanceRe Group's compensation philosophy. The Compensation Committee's responsibilities with respect to compensation, as set forth in its charter, is discussed in detail within RenaissanceRe's Proxy Statement which is available on the RenaissanceRe website www.renre.com.

Executive officers of RenaissanceRe do not participate in any retirement programs that are not generally available to other members of staff.

3.1.5. Transactions with Related Parties

Amounts due to and from affiliates as presented in our financial statements are non-interest bearing and payable on demand.

Reinsurance-Related Transactions

The Company has in force a quota share treaty with Renaissance Reinsurance.

Other items

The Company reimburses RenaissanceRe, Renaissance Services (UK) Ltd., and Renaissance Services of Europe Ltd. for certain general and administrative expenses paid on its behalf.

3.2. FIT AND PROPER REQUIREMENTS

In line with the requirements of Article 42 of the Directive, the Company has measures in place to ensure that all persons in key positions have adequate professional qualifications, knowledge and experience, and are of good repute and integrity.

Certain positions have been prescribed by the CBI as Pre-Approval Controlled Functions, and prior approval of the CBI is required before an individual can be appointed to a Pre-Approval Controlled Function.

3.2.1. Board of Directors

3.2.1.1. Assessment of Fitness and Probity

All appointments to the Board are at the approval of a majority of the directors and only after a formal, rigorous and transparent procedure for each appointment has been followed. The process ensures that the fitness and probity of potential Board candidates is assessed prior to an individual being appointed to the Board. All appointments are also subject to CBI approval.

Several factors are considered when assessing the fitness and probity of an individual as below:

Competent and capable

The individual must comply with rules as set out in section 3 of the CBI Fitness and Probity standards. A person shall have the qualifications, experience, competence and capacity appropriate to the relevant function and must be able to demonstrate that he or she:

- has professional or other qualifications and capability appropriate to the relevant function;
- has obtained the competence and skills appropriate to the relevant function, whether through training or experience gained in an employment context;

- has shown the competence and proficiency to undertake the relevant function through the performance of previous functions;
- has a sound knowledge of the business of the regulated financial service provider as a whole;
- has a clear and comprehensive understanding of the regulatory and legal environment appropriate to the relevant function;
- shall not allow the conduct of concurrent responsibilities to impair his or her ability to discharge the duties of the relevant function or otherwise allow personal conflicts of interest to arise in carrying out his or her pre-approval controlled functions or controlled functions; and
- is compliant with the applicable Minimum Competency Code issued by the CBI.

Honest, ethical and to act with integrity

The individual must comply with rules as set out in section 4 of the CBI Fitness and Probity standards. A person must be able to demonstrate that his or her ability to perform the relevant function is not adversely affected to a material degree where one or more of the following may be applicable:

- the person is or was a sole trader or a director or partner in a legal entity, which has in any jurisdiction, been refused, prohibited, restricted or suspended from the right to carry on any trade, business or profession for which a license, registration or other authorisation is required by the law;
- the person has been the subject of any complaint made to the CBI, the Financial Services Ombudsman or any equivalent body;
- the person is or has been subject to any disciplinary proceedings;
- the person has been, in any jurisdiction, dismissed, or asked to resign and did resign;
- the person has, in any jurisdiction, been a director of a company that was struck off the register of companies;
- the person has been disqualified or restricted from acting as a director in any jurisdiction or has been disqualified from acting in any managerial capacity;
- the person has, in any jurisdiction been convicted of an offence either of money laundering or terrorist financing (or their equivalents);
- been convicted of an offence which could be relevant to that person's ability to perform the relevant function;
- had a finding, judgment or order made against him/her involving fraud, misrepresentation, dishonesty or breach of trust;
- the person has been the subject of any civil penalty enforcement action taken by a regulatory authority under any law in any jurisdiction;
- the person has been untruthful or provided false or misleading information to the CBI or been uncooperative in any dealings with the CBI;
- the person, or any business with which the person held a position of responsibility or influence has been or is being, in any jurisdiction, investigated, disciplined, censured, suspended or criticised by a regulatory or professional body, a court or tribunal or any similar body, whether publicly or privately; or
- the person has, in any jurisdiction, been found by the CBI or any other regulatory authority to have perpetrated or participated in any negligent, deceitful or otherwise discreditable business or professional practice.

Financially Sound

The individual must comply with rules as set out in section 5 of the CBI Fitness and Probity standards, including but not limited to:

- A person shall manage his or her affairs in a sound and prudent manner.
- A person must be able to demonstrate that his or her role in a relevant function is not adversely affected to a material degree by the fact that one or more of the following may be applicable:
 - The person has defaulted upon any payment due arising from a compromise or scheme of arrangement with his or her creditors;
 - the person is subject to a judgment debt which is unsatisfied;
 - the person is or has been the subject of a bankruptcy petition;
 - the person has been adjudicated as bankrupt and the bankruptcy is undischarged; or
 - the person was a director of an entity which has been the subject of insolvency.

3.2.1.2. Skills and Expertise

The Company does not set specific criteria for directors but believes that candidates should show evidence of leadership in their particular field and have broad experience and the ability to exercise sound business judgment. The Board considers the diversity, skills, and experience of candidates in the context of the needs of the Board as a whole. When evaluating individual director nominees, the Board also considers the CBI's corporate governance requirements.

3.2.2. Senior Management

The Company has several processes in place for assessing an individual's fitness and probity prior to appointment and ensuring that an individual continues to be fit and proper throughout their period of service to the Company. The assessment of an individual's fitness and probity will take place prior to being appointed.

A summary of these processes that exist to monitor senior management's on-going fitness and probity is set out below:

- **Code of Ethics and Conduct (the "Code of Ethics"):** All RenaissanceRe Group companies aspire to the highest standards of honesty, integrity and business conduct. The RenaissanceRe Code of Ethics is provided to all new employees and is available on the Compliance Portal of RenaissanceRe's intranet. Ethical and compliant behaviour is the responsibility of all RenaissanceRe employees. All employees are required to confirm their compliance with the Code of Ethics on an annual basis.
- **Compliance Training:** There is mandatory compliance training for all RenaissanceRe staff every year. Employees are also required to revisit the Code of Ethics and Critical

Compliance Policies each year and sign off to confirm their understanding, commitment and on-going compliance.

- **Performance Management Programme:** The annual performance management program is conducted for all employees. This involves an appraisal of performance for the previous year including whether or not goals set the previous year were achieved, how an employee measures up against clearly defined skill sets that he/she is expected to possess in order to be effective and successful in his/her current position, an assessment of personal qualities including communication, interpersonal and leadership skills and an assessment against the corporate core values. The annual appraisal also provides an opportunity to document goals and development plans for the following year.

In addition to the Company's internal procedures, certain of these management positions are prescribed by the CBI as Pre-Approval Controlled Functions, and prior approval of the CBI is required before an individual can be appointed to a Pre-Approval Controlled Function. Such individuals are subject to the ongoing internal fitness and probity assessments as noted above.

3.3. RISK MANAGEMENT SYSTEM

3.3.1. Risk Management Framework

The Company, as a wholly owned subsidiary of RenaissanceRe, follows the RenaissanceRe risk management framework. The following is an overview of the RenaissanceRe Group risk management strategy and appetite. RenaissanceRe has an Enterprise Risk Management (ERM) framework that is currently rated by Standard & Poor's ("S&P") as 'Very Strong'.

We believe that high-quality and effective risk management is best achieved when it is a shared cultural value throughout the organization, and we consider ERM to be a key process which is the responsibility of every individual within the Company. We have developed and utilize tools and processes which we believe support a culture of risk management and which create a robust framework for ERM within the RenaissanceRe Group. We believe that our ERM processes and practices help us to: (i) identify potential events that may affect us; (ii) quantify, evaluate and manage the risks to which we are exposed; and (iii) provide reasonable assurance regarding the achievement of our objectives. We believe that effective ERM can provide us with a significant competitive advantage. We also believe that effective ERM assists our efforts to minimize the likelihood of suffering financial outcomes in excess of the ranges which we have estimated in respect of specific investments, underwriting decisions, or other operating or business activities, although we do not believe this risk can be eliminated.

We believe that our risk management tools support our strategy of pursuing opportunities and help us to identify opportunities that we believe to be the most attractive. In particular,

we utilize our risk management tools to support our efforts to monitor our capital position, on a consolidated basis and for each of our major operating subsidiaries, and to allocate an appropriate amount of capital to support the risks that we have assumed in the aggregate and for each of our major operating subsidiaries. We believe that our risk management efforts are essential to our corporate strategy and our goal of achieving long-term growth in tangible book value per share plus the change in accumulated dividends for RenaissanceRe shareholders.

Our ERM framework operates via a three lines of defence model. The first line of defence consists of individual functions that deliberately assume risks on our behalf and own and manage risk within the Company on a day-to-day and business operational basis. The second line of defence is responsible for risk oversight and supports the first line to understand and manage risk. A dedicated risk team led by the Group CRO is responsible for this second line and reports to the RenaissanceRe Board of Directors Investment and Risk Management Committee and the Group CEO. The third line of defence, our Internal Audit team, reports to the Audit Committee of the RenaissanceRe Board of Directors and provides independent, objective assurance as to the assessment of the adequacy and effectiveness of our internal control systems and also coordinates risk-based audits and compliance reviews and other specific initiatives to evaluate and address risk within targeted areas of our business.

The principal areas that make up the Group's ERM framework are assumed risk (including reserve risk), business environment risk and operational risk:

- **Assumed Risk.** We define assumed risk as activities where we deliberately take risk against the Company's capital base, including underwriting risks and other quantifiable risks such as credit risk and interest rate risk as they relate to investments, ceded reinsurance credit risk and strategic investment risk, each of which can be analysed in substantial part through quantitative tools and techniques. Of these, we believe underwriting risk to be the most material to us. In order to understand, monitor, quantify and proactively assess underwriting risk, we seek to develop and deploy appropriate tools to, among other things, estimate the comparable expected returns on potential business opportunities, and estimate the impact that such incremental business could have on our overall risk profile. Embedded within our consideration of assumed risk is our management of the Company's aggregate, consolidated risk profile. In part, through the utilization of Renaissance Exposure Management System ("REMS©") (our proprietary, computer-based pricing and exposure management system) and our other systems and procedures, we seek to analyse our in-force aggregate assumed risk portfolio on a daily basis. We believe this capability helps us to manage our aggregate exposures, as well as to rigorously analyse individual proposed transactions and evaluate them in the context of our in-force portfolio. This aggregation process captures line of business, segment and corporate risk profiles, calculates internal and external capital tests and explicitly models ceded reinsurance. Generally, additional data is added quarterly to our aggregate risk framework to reflect updated or new information or estimates relating to matters such as interest rate risk, credit risk, capital

adequacy and liquidity. This information is used in day-to-day decision making for underwriting, investments and operations and is also reviewed quarterly from both a unit level and in respect of our consolidated financial position. We also regularly assess, monitor and review our regulatory risk capital and related constraints.

- **Reserve Risk** is a subcomponent of assumed risk. We define reserve risk as the risks related to our reserve for net claims and claim expenses, including the amount, both absolute and relative, of our outstanding reserve for net claims and claim expenses, and the impact of economic, social, legal and regulatory matters. Our reserve for net claims and claim expenses is subject to significant uncertainty and has the potential to develop adversely in future periods. While reserve risk may increase in both absolute terms and relative to its overall consideration in our ERM framework, we employ robust resources, procedures and technology to identify, understand, quantify and manage this risk.
- **Business Environment Risk.** We define this as the risk of changes in the business, political or regulatory environment that could negatively impact our short term or long-term financial results or the markets in which we operate. Accordingly, these risks are predominately extrinsic to the Company and in general, our ability to alter or eliminate these risks is limited. Rather, our efforts focus on monitoring developments, assessing potential impacts of any such changes, and investing in cost effective means to attempt to mitigate the consequences of and ensure compliance with any new requirements applicable to us.
- **Operational Risk.** We are subject to several additional risks arising out of operational, regulatory, and other matters. We define operational risk to include the risk that we fail to create, manage, control or mitigate the people, processes, structures or functions required to execute our strategic and tactical plans and assemble an optimized portfolio of assumed risk, and to adjust to and comply with the evolving requirements of business environment risk applicable to us. Considering the rapid evolution of our markets, business environment, and business initiatives, we seek to continually invest in the tools, processes and procedures to mitigate our exposure to operational risk on a cost-effective basis. As with assumed risk and business environment risk, operational risk presents intrinsic uncertainties, and we may fail to appropriately identify or mitigate applicable operational risk.

Controls and Compliance Committee (“CCC”). We believe that a key component of the Group’s current operational risk management platform is the Group’s CCC. The CCC is comprised of senior Group-level executives including RenaissanceRe’s Chief Financial Officer, Group Chief Compliance Officer, Chief Accounting Officer, Group Chief Risk Officer, Group Head of Internal Audit, staff compliance professionals and representatives from our business units. The purpose of the CCC is to establish, assess the effectiveness of, and enforce policies, procedures and practices relating to accounting, financial reporting, internal controls, regulatory, legal, compliance and related matters, and to ensure

compliance with applicable laws and regulations, the Group's Code of Ethics, and other relevant standards. In addition, the CCC is charged with reviewing certain transactions that potentially raise complex and/or significant tax, legal, accounting, regulatory, financial reporting, reputational or compliance issues. The CEO of the Company is also a key member of the Group's CCC and thus attends the CCC meetings. This implies that any Company-specific controls and compliance matters can be brought to the attention of the CCC for discussion, escalation and resolution, as applicable.

In addition, we address other areas of operational risk through our disaster recovery program, human resource practices such as motivating and retaining top talent, our strict tax protocols and our legal and regulatory policies and procedures.

Ongoing Development and Enhancement. We seek to reflect and categorize risks we monitor in part through quantitative risk distributions, even where we believe that such quantitative analysis is not as robust or well developed as our tools and models for measuring and evaluating other risks, such as catastrophe and market risks. We also seek to improve the methods by which we measure risks. Effective risk management is a core attribute of our culture and we believe it is a continual process that requires ongoing improvement and development. We seek from time to time to identify effective new practices or additional developments both from within our industry and from other sectors. We believe that our ongoing efforts to embed ERM throughout our organization are important to our efforts to produce and maintain a competitive advantage to achieve our corporate goals.

In order for the Board to be satisfied that there is a framework of prudent and effective processes and controls in place which enables risk to be assessed and managed throughout the Company, it relies on the reports it receives from the Company's CRO or a relevant member of senior management.

3.3.2. Risk Management Function

The mission of the Company's risk management function is to ensure that the Company has a coordinated and efficient risk management system in place that enables all material risks to be captured, measured and managed so that the Company's overall business objectives are met.

The risk management function is responsible for interacting with the RenaissanceRe Group's risk management function to ensure that the Company's risk management framework and activities are aligned with those of the RenaissanceRe Group.

The Board will rely on the Company's Risk Committee to assist its understanding, and advise on, the current risk exposures of the firm and the link between its risk profile, risk tolerance limits and overall solvency needs. The Risk Committee is also responsible for advising and reporting to the Board on the effectiveness of the firm's risk and capital management

strategies which provides assurance that a sufficient level of capital is either in place or available, as required.

The Company's CRO coordinates the execution of risk management processes across the Company through ownership of the Company's risk policies and having responsibility for reporting on all risk matters to the Risk Committee and Board.

The CEO has overall executive responsibility for the Company's operations, compliance and performance, and serves as the main link between the Board and senior management.

3.4. ORSA

In accordance with Article 45 of the Solvency II Directive, the Company is required to conduct an Own Risk and Solvency Assessment ("ORSA"). The purpose of the ORSA is two-fold:

1. It is an internal assessment process which is embedded in the strategic decisions of the Company. It represents our opinion of the risks, overall solvency needs, and own funds held. The process enables us to match our own funds to our risk profile. Any strategic decision that may affect the risk profile and/or own funds position of the Company is considered through the ORSA process before such a decision is taken;
2. It is a supervisory tool for the CBI – the Company is required to report the findings of annual ORSAs to CBI via their online ORSA Reporting tool. The annual frequency of the ORSA submission is deemed proportionate to the Company's current risk profile and the likely volatility of its overall solvency needs relative to its capital position.

In addition to the annual ORSA reviews, the Company will perform an ad-hoc ORSA following any significant change in risk profile or in response to any request from CBI to do so. Other triggers for a more frequent ORSA may include, but is not limited, to:

- Start-up of a new line of business or other significant change to existing book of business;
- Significant market event leading to potential opportunities for the firm;
- Major change in risk appetite;
- Major changes to reinsurance arrangements;
- EIOPA triggered changes to the Standard Formula calculation;
- Major changes to mix of assets.

3.4.1. ORSA Process

The processes detailed below are the component parts of the annual ORSA process:

Risk Assessment

- Consideration of link between risk profile, approved risk tolerance limits and overall solvency needs
- Identification of material risks
- Assessment of current risks against risk appetite

- Assessment of risks not quantified in the Solvency Capital Requirement (“SCR”) Standard Formula calculation
- Assessment of future risk profile in line with future business plans

Generation of SCR using Standard Formula

- Elicitation of data from systems
- Validation of inputs
- Consideration of expert judgement
- Second set of eyes reviews and ultimately calculation of SCR and Minimum Capital Requirement (“MCR”).

Execution of Technical Provisions

- The execution of the technical provisions process to calculate technical provisions for the Company in compliance with relevant Articles and for input to the Standard Formula calculation.

Validation

- Validation of data at all stages. To include second set of eyes reviews where appropriate.

Capital and Solvency Review

- Consideration of appropriateness of Standard Formula SCR given current risks faced
- Own assessment of economic capital needs for current year and over the medium term based on Company’s strategy
- Assessment of available funds against capital requirements (both current and projected)

Stress and Scenario Testing

- Annual assessment of risk, capital and solvency position under stressed conditions
- Stress tests to be determined annually by the risk management function

Documentation

- Production of a record of each ORSA/Internal ORSA Report
- All documentation to support and facilitate completion of on-line ORSA reporting tool for CBI

3.4.2. Review and Approval of ORSA

The overall goal of the ORSA is to provide a mechanism through which the Board is able to assess the risks faced and the level of economic capital required to meet the strategic objectives of the business. The Board is responsible for the review, challenge and approval of the ORSA.

3.4.3. Assessment of Solvency Requirements

The solvency needs of the Company are assessed via the ORSA process using the Solvency II standard formula basis to calculate the SCR. The standard formula approach remains appropriate for the Company as its risk profile does not materially deviate from the assumptions underlying the SCR calculation. It is the Company's view that the use of the standard formula is proportionate to the scale of the Company's risk profile.

The overall solvency needs of the Company are assessed for material growth in excess of expectations, and to ensure that, under the Standard Formula, the Company has sufficient capital in place to support its current platform and allow for future growth. Stress tests are also performed to identify whether the Company has sufficient capital under certain scenarios.

3.5. INTERNAL CONTROL SYSTEM

3.5.1. Code of Ethics

The RenaissanceRe Code of Ethics underpins the control environment within all RenaissanceRe Group entities, including the Company. The Code of Ethics provides a framework by which all employees are expected to work. An assessment of an individual's achievement in meeting the Code of Ethics is included within the annual performance management process and all employees are required to sign off against the Code of Ethics and critical compliance policies on an annual basis. All new employees are required to sign off against the Code upon joining RenaissanceRe.

3.5.2. Control Framework

In support of the Code of Ethics, there are a number of specific activities which operate within RenaissanceRe that collectively form a control framework and play an important role in minimizing risk throughout the organization.

RenaissanceRe's management is responsible for establishing and maintaining effective internal control over financial reporting as defined in Rules 13a-15(f) and 15d-15(f) under the Securities Exchange Act of 1934, as amended. The Company's control framework is designed to provide reasonable assurance regarding the reliability of financial reporting. This control framework is subject to review and assessment by the internal audit function as discussed in 3.6 below.

3.5.3. Compliance Function

Compliance is an integral part of the business, as it establishes standards and helps build a reputation, whilst avoiding regulatory penalties and reducing liability. Senior management, along with the Compliance function, work to build a corporate culture in which all members

of staff understand the importance of following guidelines and controls. The Board is ultimately responsible for the Company's compliance and delegates day to day compliance responsibilities to the Compliance Function. The Head of Compliance leads the Compliance Function and is appointed by, and reports to, the Board. The Head of Compliance reports regularly to the Board on all compliance related issues via a quarterly compliance checklist, which enables the Board to continuously ensure that the Company complies fully with all applicable rules and requirements. The charter for the Compliance function is included in the Company's Governance Map.

3.6. INTERNAL AUDIT

3.6.1. Internal Audit Function

3.6.1.1. Scope of Internal Audit Function

The scope of internal audit's work is to determine whether the Company's operational risk management, internal control and governance processes, as designed and represented by management, are adequate and operating effectively. To accomplish this, internal audit activities include:

- Testing of internal controls over financial reporting
- Evaluating the reliability and integrity of management information and the means used to identify, measure, classify, and report such information
- Evaluating the systems established by management to ensure compliance with those policies, plans, procedures, laws and regulations which would have a significant impact on operations and reports, and whether the Company is in compliance;
- Evaluating the means of safeguarding assets and, as appropriate, verifying the existence of such assets;
- Evaluating operations or programs to ascertain whether results are consistent with established objectives and goals and whether the operations or programs are being carried out as planned; and
- Evaluating whether resources are sufficient and used efficiently.

Opportunities for improving internal control to support the Company's Board and Executive Management with protecting the assets, reputation and sustainability of the Company may be identified during the performance of the above procedures. When such opportunities for improvements are identified, they will be communicated to the appropriate level of management.

3.6.1.2. Internal Audit Team

The Head of Internal Audit - Europe, a controlled function holder as approved by the CBI, oversees the internal audit function and assists management and the Audit Committee of the Board in discharging their responsibilities by: a) furnishing them with analyses, advice and recommendations concerning the key risk areas reviewed and related assurance

activities performed; b) promoting effective and efficient controls; and c) pursuing corrective action on significant issues.

3.6.2. Independence of Internal Audit Function

To provide for the independence of Internal Audit:

- the Head of Internal Audit – Europe reports to the Audit Committee of the Board;
- the Audit Committee is responsible for assisting with monitoring the effectiveness, independence and performance of the Internal Audit function serving the Company;
- the Audit Committee is responsible for reviewing and approving the annual internal audit plan; and
- the Audit Committee is responsible for reviewing internal audit reports and monitoring action taken to address recommendations.

3.7. ACTUARIAL FUNCTION

The Company's actuarial function coordinates the calculations of technical provisions internally with a recalculation carried out every quarter. In addition, the team is responsible for the SCR calculation through the standard formula, which is part of the team's contribution to the effective implementation of the risk management system.

The actuarial function is defined as a core function within the Company Structure of Governance. It has a documented charter which sets out its mission, structure and key responsibilities. The function reports through the finance team and has regular access to the Company's senior management and Board to discuss any actuarial issues.

An Actuarial Function report is produced and submitted to the Board at least annually. It shall document the tasks, processes and practices that have been undertaken by the Actuarial Function and their results, and shall clearly identify any deficiencies and give recommendations as to how such deficiencies should be remediated.

3.8. OUTSOURCING

The Company has a documented outsourcing policy which defines the process to follow when considering, assessing, reviewing, approving and managing an outsourcing arrangement in accordance with Solvency II Directive. This policy is reviewed and approved annually by the Board.

The Company will not enter into key outsourcing arrangements without approval of the Board. New outsourcing proposals are required to be referred to the CEO, who will arrange for the Board to consider, review and approve the new arrangement.

Where business and/or operational functions are outsourced to a third party or intra-group company, the Company will take steps to avoid undue additional operational risk. The

Company's management will also ensure that it remains fully responsible for discharging all of its obligations under the Solvency II Directive and other regulatory requirements.

The Company will not:

- Allow delegation by senior personnel of their own responsibilities and will ensure that any outsourcing arrangement will not undermine authorisation;
- Unduly increase operational risk;
- Impair the ability of the supervisory authorities to monitor the compliance of the Company's obligations; and
- Undermine continuous and satisfactory service to policyholders.

The Company does not currently outsource any critical functions. Prior to the outsourcing of any critical functions, the Company would notify the Central Bank of Ireland.

3.9. MATERIAL CHANGES IN SYSTEM OF GOVERNANCE

The system of governance as described in the preceding sections has not materially changed over the reporting period.

3.10. ADEQUACY OF SYSTEM OF GOVERNANCE

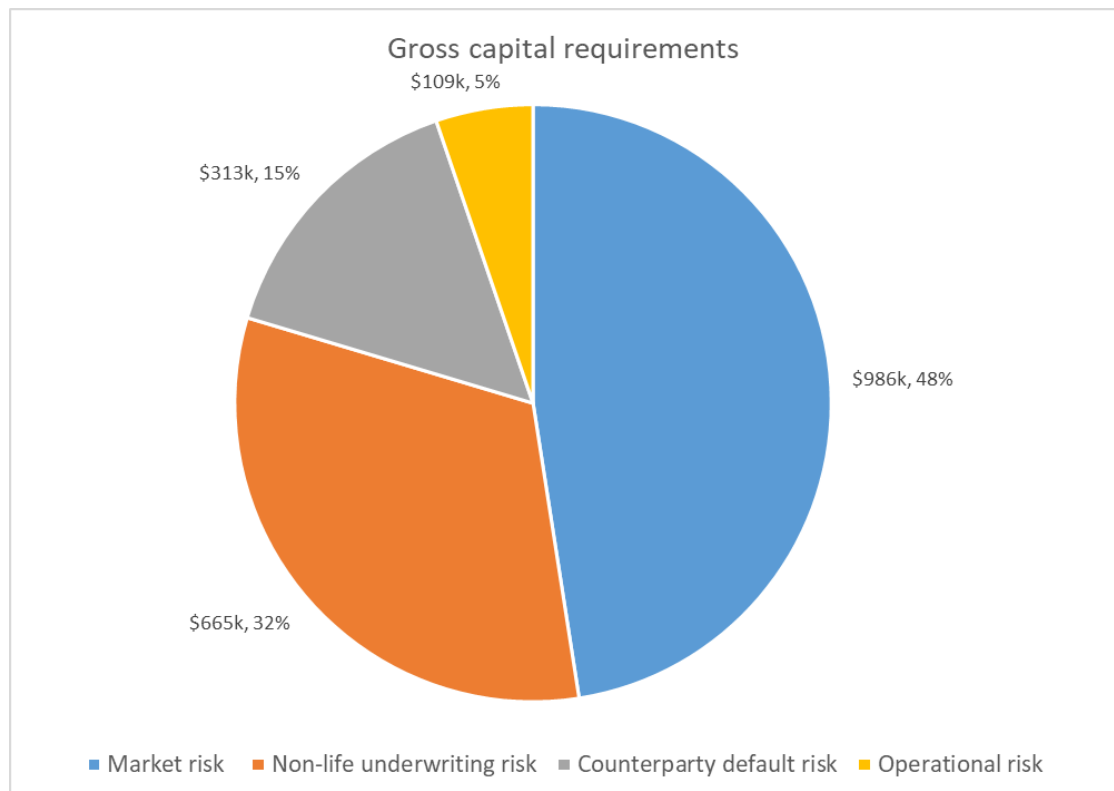
The following processes ensures that there is a regular and wide-ranging assessment of the adequacy of the Company's governance system:

- Annual evaluation of the Board – this process aims to improve Board effectiveness, maximise strengths, and tackle any identified weaknesses;
- Internal audit – using a risk-based approach in drawing up an annual audit plan, the independent Group Internal Audit team is responsible for assessing the design and operating effectiveness of the corporate governance framework within the Company;
- The ongoing review and maintenance of documentation of the structure of governance within the Company initiates a Board review of the governance framework.

4. RISK PROFILE

4.1. RISK PROFILE

The Company uses EIOPA’s prescribed Solvency II Standard Formula approach to calculate its capital requirements. The calculated capital requirements by risk category, gross of any diversification benefits, are shown below.



Based upon the results of the SCR exercise the risk profile of the entity continues to be dominated by Market Risk. The most significant change since last year is the underwriting of a small number of Non-Proportional Property Reinsurance deals, having not written any deals during 2020. More details on the risk profile of the SCR are given below.

- The Market Risk capital requirement is high relative to the other risk categories due to the large excess of assets over liabilities. The largest driver of Market Risk is Currency Risk (\$867k) as an excess of liabilities are due in GBP, relative to assets held.
- The only two classes of business with current Non-Life Underwriting Risk exposure are non-proportional property reinsurance and proportional credit & surety reinsurance. All business written receives a large amount of risk mitigation due to quota share arrangements in which 90% of property and proportional credit business and 70% of non-proportional credit business is ceded via existing internal quota share arrangements. As a result, this utilisation of reinsurance coverage

reduces the exposure to Non-Life Underwriting Risk significantly. The largest driver of Non-Life Underwriting Risk is Catastrophe Risk (\$506k) due to the new Non-Proportional Property Reinsurance deals written in 2021.

- Although there is a large amount of reinsurance protection, the capital charge for Counterparty Default Risk is mitigated by the high quality credit ratings of the Company's counterparties (all \geq A rated). The largest driver of the Counterparty Default Risk capital requirement is made up of the Type 1 counterparty default risk (\$243k) which contains the risk that there will be a default on future reinsurance recoveries and cash balances, and driven by cash exposures and recoveries due from Renaissance Re Group.
- The Operational Risk capital requirement has remained relatively small, and is calculated based 3% of the Gross Best Estimate Technical Provisions (\$3.6m).

4.1.1. Underwriting Risk

Underwriting risk is the risk that is assumed into or ceded from the Company as a result of its underwriting activities during the time period of interest. In particular, the risk of incurring claims in excess of expectations and the associated reduction in profits and/or erosion of capital. Risk related to previously earned premium, including that on expired underwriting contracts, is considered as part of reserve risk.

4.1.2. Reserve Risk

Reserving risk stems from uncertainty around the level of held reserves underlying the reinsurance contracts which have been written.

The Company's claims and claim expense reserves reflect its estimates, using actuarial and statistical projections at a given point in time, of the expectations of the ultimate and administration costs of claims incurred. Although the Company uses actuarial and computer models as well as historical reinsurance and insurance industry loss statistics, it also relies heavily on management's experience and judgement to assist in the establishment of appropriate claims and claim expense reserves.

4.1.3. Market Risk

Market risk is the risk of financial loss due to movements in financial market factors. For the Company, this could manifest itself through investment market movements, including movements in interest rates, movements in foreign exchange rates, resulting in mismatches between currencies in which assets and liabilities are denominated, and changes in credit ratings or investment prices. Credit risk on the investment portfolio is deemed modest given the construction of the portfolio. Foreign exchange exposures are managed at the RenaissanceRe Group level by the Group Treasury function.

4.1.4. Counterparty Default Risk

Counterparty default risk is the risk of loss in the value of financial assets due to counterparties failing to meet part or all of their obligations or failing to meet them in a timely manner, as well as adverse changes in the market value of invested assets caused by changed perceptions of the creditworthiness of counterparties. The key counterparties with whom we are exposed to credit risk include the reinsurers and the reinsured. The RenaissanceRe Group has established counterparty credit rating guidelines providing a suggested maximum limit to be exposed to individual reinsurers based on their credit rating. The Company relies on the Group's established credit guidelines and limits in managing its credit risk exposure.

The remaining counterparty default risk exposure stems from premium receivables, with either cedants or brokers as potentially defaulting counterparties. In the case of non-payment of premium by cedants, any reinsurance contracts would become voidable, limiting the downside considerably. In the case of broker default, for the Company to sustain a loss there would need to be malfeasance on the part of the broker meaning that premiums meant for the Company and paid to the broker were not ring-fenced.

These eventualities are included at a high level in the Operational Risk register.

4.1.5. Liquidity Risk

Liquidity risk is the risk that the Company, although solvent, might not have sufficient available liquid resources to enable it to meet its obligations as they fall due, or could secure them only at excessive cost. The objective is to preserve capital and provide adequate liquidity to support the Company's underwriting and day-to-day operations. The Company is required to submit quarterly and annually solvency returns to the CBI. The CBI Solvency Return is reviewed at least annually by the Board of Directors.

The investment portfolio of the Company is subject to a set of tight guidelines, as set out in its Investment Guidelines, with a largely high quality and short term focus thereby providing sufficient liquidity for prompt payment of claims and short term obligations. Liquidity risk is not deemed to be a material risk for the Company.

4.1.6. Operational Risk

A risk register has been drawn up to capture the Company's material risks and includes a brief description of each specific risk, ownership of each risk and allocates a score at an inherent (before controls) and residual (after application of controls) level per risk.

The operational risk component of the Standard Formula SCR is formulaic and is derived from the Gross Earned Premium used for the overall capital calculation. Notwithstanding this, the Company's management identify and rank operational risks using the risk register,

and a set of key risk indicators (KRIs) have been developed to act as early warning indicators in monitoring the profile of those operational risks deemed to be most material to the Company. The Risk Committee reviews these KRIs on a quarterly basis.

A key element of the control framework is the Service Level Agreement that the Company has entered into with RenaissanceRe Services Ltd. to provide services to support a number of areas including but not limited to data processing, technical accounting, reinsurance cash management, legal, treasury, administrative and operations. This agreement limits operational risk exposure within the Company. Other aspects of the control framework are:

- Segregation of duties and defined authority limits;
- Various checks carried out on underwriting transactions such as second set of eyes review and nightly portfolio review process;
- Open channels of communication between the management team and staff throughout the company and wider Group; and
- The operation of effective compliance, finance, risk management and internal audit functions that report to the Board on a regular basis.

All of the above are subject to periodic review by the Group Internal Audit function, which reports any findings to the Audit Committee of the Board as necessary.

4.2. RISK EXPOSURE

The Company's key risks are in the following areas: underwriting, credit, market, reserving, group (also known as retrocessional) and operational risk. The Company also has exposure to liquidity risk but this is not deemed to be material at present. Each risk category is discussed above (in section 4.1) in terms of describing the key risks and controls that exist to mitigate them.

All risks are identified, assessed and monitored, and mitigating controls identified, through the ORSA process as described in section 3.4 of this report. The Company does not have exposure arising from off balance sheet positions and does not transfer risk to any special purpose vehicles.

4.3. MATERIAL RISK CONCENTRATIONS

The majority of reinsurance is placed with Renaissance Reinsurance which is rated A+ by S&P. In addition, the reinsurance premium under this quota share treaty is negligible in comparison with the \$7.6 billion of GAAP equity at Renaissance Reinsurance as at December 31, 2020. This gives us comfort that whilst the reinsurance is concentrated to one party, the risk of the Company not receiving recoveries is very low.

4.4. MITIGATION OF RISKS

As noted above, all risks are identified, assessed and monitored, and mitigating controls identified, through the ORSA process as described in sections 3.4 and 3.5 of this report.

The Company has well-established measures in place that create a strong control environment for underwriting and reserving and these collectively provide an effective means of managing reinsurance risk exposures (underwriting and reserving risk). The Company aims to ensure that relevant individuals are fully aware of their risk management responsibilities with respect to reinsurance risk. This ranges from the second set of eyes review processes performed within deal underwriting, monitoring of compliance deadlines and other risk control measures within RenaissanceRe. The nature of the risk mitigation techniques adopted varies according to the risk category in question and the individual risk policies provide summary details of the underlying processes that exist to mitigate the risks within each category.

We use reinsurance as a tool to manage the Company's risk tolerances, manage capital efficiency and provide flexibility.

The CEO is charged with ensuring that the Company's credit, liquidity and market (including foreign exchange) risk exposures are managed appropriately in accordance with the Company's Risk Appetite Statement.

Currently, the Company holds cash and fixed income investments. The investment policy of the Company is to maintain liquid funds/assets, of short duration, that are highly creditworthy. The Company has zero tolerance to be operationally illiquid for any time period. In assessing the levels of liquidity required by the Company, the CEO considers the likely cash flow requirements for the Company on a regular basis. In addition, the RenaissanceRe claims operations team is responsible for ensuring that claims are paid on a timely basis and that sufficient liquidity is available to pay claims and/or cede premiums.

4.5. INVESTMENT OF ASSETS

The Company's investment portfolio strategy is in line with the prudent person principle and seeks to preserve capital and provide us with a high level of liquidity, which means that the large majority of the Company's investment portfolio consists of highly rated fixed income securities, including U.S. Treasuries, agencies, municipals, local authorities, highly rated sovereign and supranational securities.

At a Group level, the RenaissanceRe Group Board's Investment and Risk Management Committee ("IRMC") assists the RenaissanceRe Board with oversight of RenaissanceRe Group investment activities and financial risk management. The IRMC's responsibilities, as more fully described in its charter, include discussion of investment strategies, performance and risk management with the Chief Investment Officer and other senior officers; reviewing management's procedures regarding development and compliance with investment strategies, risk limits, guidelines and objectives; ensuring adequate procedures to monitor adherence to investment guidelines and limits; overseeing and reviewing performance measurement systems that are used to monitor the performance of the Group's investment portfolio and evaluate performance; reviewing and evaluating the performance of

investment managers; and overseeing the means and process by which we discharge our fiduciary duties with respect to investment matters to minority investors in our managed joint ventures.

The majority of the assets of RenaissanceRe and its affiliates and subsidiaries are managed by third party asset managers. The managers are selected by the investments team and the process by which the managers are selected is reviewed and overseen by the IRMC. The mandates and guidelines that govern these arrangements are designed by the investment team, and the investments team oversees and reviews these third-party managers to ensure compliance with investment guidelines for the mandates. The Investment Guidelines include:

Credit quality

All portfolios will invest in instruments or securities with a minimum rating of AA- or equivalent by S&P and one other internationally recognised credit rating agency. If an instrument falls below AA-, the procedure for guideline violation will be followed.

If three ratings for a security are provided, a majority rule shall apply, i.e. if two of the three ratings meet the minimum credit quality then that security will be deemed compliant. However, if S&P has AA- or higher rating and Moody's & Fitch have ratings below the minimum credit quality, then the security will be deemed to be in breach of compliance.

Duration and Maturity

Duration and Maturity shall be specified in accordance with each investment strategy and defined in the portfolio specific Investment Guidelines. The overall duration of the aggregate portfolio shall be four years or less.

Diversification

The portfolio will be constructed with, and will maintain a level of diversification as deemed appropriate.

Marketability

All investment instruments will be of sufficient size and issues that are traded actively to facilitate minimum cost and accurate valuation.

Allowable assets

Allowable assets currently include:

- U.S. Treasury and Agencies securities
- Dollar denominated Non-U.S. governments and their agencies
- Supranational Organisations
- Short-term cash like assets
- Foreign Government Debt.

Other allowable instruments can be specified in approved manager specific Investment Guidelines.

4.6. STRESS TESTING AND SENSITIVITY ANALYSIS

As part of the ORSA process, a number of stress tests are performed to assess the level of solvency. Most of the stress tests focus around additional premium on the balance sheet and the additional catastrophe risk which comes hand in hand with that additional premium. This is the risk to which the Company is most sensitive. Less material risks which have been stressed include market risk and counterparty default risk.

The following stress tests were performed through use of a standard formula template. Some of these include significant growth due to a change in the market environment or from opportunities presented potentially by Brexit:

1	The impact of writing an additional large proportional property policy of \$50m of gross written premium, with exposure across the US. This is within scope of the 90% outwards quota share so the additional net premium is \$5m.
2	The impact of writing an additional large non-proportional property policy of \$15m of gross written premium, with exposure only in the South-East US. This is within scope of the 90% outwards quota share so the additional net premium is \$1.5m.
3	The impact from an increase of gross and net earned premium over the next 12 months by a factor of 2.
4	The impact from an increase of gross and net earned premium over the next 12 months by a factor of 5.
5	The impact from all of our current counterparties being downgraded to non-investment grade (rating "BBB").
6	The impact of moving all the assets held in the financial investment exposures from USD to GBP which creates a larger currency risk component.
7	The impact of writing an additional \$25m gross written premium of proportional property policy, based with exposure only in the UK. This is within scope of the 90% outwards quota share so the additional net premium is \$2.5m.
8	The impact of increasing the existing Technical Provisions by a factor of 2.
9	Combination of some of the stress tests noted above. This includes: <ul style="list-style-type: none"> · Increase premium volumes by a factor of 5 (Stress Test 4); · Downgrade of counterparties to non-investment grade status [rating "BBB"] (Stress Test 5); · Impact of moving all the assets held in the financial investment exposures from USD to GBP (Stress Test 6); · Increase Technical Provisions by a factor of two (Stress Test 8).

In each of the above scenarios, the Company maintained sufficient capital.

5. SOLVENCY VALUATION

5.1. ASSET VALUATION

5.1.1. Asset Valuation - Solvency II versus Statutory Financial Statements

The valuation of assets and liabilities for solvency purposes is performed in line with Article 75 of Directive 2009/138/EC. A summary is shown of the valuation at the beginning and end of the year below.

As can be seen below, the total assets have reduced, driven by the reduction in cash amounts which have been paid out during the year. The difference between the Solvency II and Statutory accounts values have also decreased since last year due to reductions in reinsurance UPR (“unearned premium reserve”) recoveries, not due receivables, and deferred acquisition costs which are re-allocated on a Solvency II basis.

2020 Year End Balance Sheet - Assets

Balance Sheet (USD\$)	Solvency II value	Statutory accounts value	Difference in Valuation
	C0010	C0020	
Assets			
Deferred acquisition costs	0	361,138	-361,138
Investments (other than assets held for index-linked and unit-linked contracts)	11,964,204	11,941,200	23,004
Bonds	11,766,858	11,743,854	23,004
Government Bonds	9,349,034	9,336,791	12,244
Corporate Bonds	2,417,824	2,407,063	10,760
Collective Investments Undertakings	197,345	197,345	0
Reinsurance recoverables from:	519,729	1,452,432	-932,703
Non-life and health similar to non-life	519,729	1,452,432	-932,703
Non-life excluding health	519,729	1,452,432	-932,703
Deposits to cedants	2,221	1,626	595
Reinsurance receivables	13,588	369,211	-355,623
Cash and cash equivalents	1,723,096	1,723,096	0
Any other assets, not elsewhere shown	7,125	30,129	-23,004
Total assets	14,229,962	15,878,831	-1,648,869

2019 Year End Balance Sheet - Assets

Balance Sheet (USD\$)	Solvency II value	Statutory accounts value	Difference in Valuation
	C0010	C0020	
Assets			
Deferred acquisition costs	0	535,938	-535,938
Investments (other than assets held for index-linked and unit-linked contracts)	11,435,810	11,368,722	67,087
Bonds	11,325,254	11,258,167	67,087
Government Bonds	10,093,343	10,052,731	40,612
Corporate Bonds	1,231,911	1,205,436	26,475
Collective Investments Undertakings	110,555	110,555	0
Reinsurance recoverables from:	412,955	1,903,382	-1,490,427
Non-life and health similar to non-life	412,955	1,903,382	-1,490,427
Non-life excluding health	412,955	1,903,382	-1,490,427
Deposits to cedants	2,110	1,564	546
Reinsurance receivables	12,429	751,237	-738,808
Cash and cash equivalents	4,121,526	4,121,526	0
Any other assets, not elsewhere shown	1,081	68,169	-67,087
Total assets	15,985,911	18,750,538	-2,764,628

Deferred Acquisition Costs: Deferred Acquisition Costs are costs arising from the conclusion of insurance contracts that are incurred during the reporting period but which relate to a subsequent reporting period and which are carried forward to subsequent reporting periods. Deferred acquisition costs (and reinsurers' share of deferred acquisition costs) are amortised over the period in which the related premiums are earned. Deferred acquisition costs are not recognised for Solvency II purposes hence the difference in valuation between Solvency II and the statutory accounts value.

Investments: Investments are recognised at fair value on both a Solvency II and statutory accounts basis. The difference in valuation relates to the allocation of accrued interest which for the purposes of Solvency II has been included within Investments whereas for the statutory accounts this is included within the line 'Any other assets'.

Reinsurance Recoverable: In the Solvency II balance sheet this refers to the reinsurers' share of technical provisions and is valued as part of the net technical provisions. Please refer to the section below for details relating to the valuation of technical provisions.

To note, included within the statutory accounts value of Reinsurance Recoverable is the Reinsurer share of Unearned Premium. Unearned premiums are those proportions of premiums written in a year that relate to periods of risk after the reporting date. In respect of general insurance business, written premiums are recognised and earned over the period of the policy on a time apportionment basis having regard where appropriate, to the incidence of the risk. The proportion attributable to subsequent periods is deferred as a provision for unearned premiums. Unearned reinsurance premiums are deferred over the term of the underlying direct insurance policies for risks-attaching contracts and over the term of the reinsurance contract for losses-occurring contracts. Like deferred acquisition

costs, unearned premiums (including the reinsurer's share) are not recognised for Solvency II purposes.

Deposits to Cedants: Deposits to Cedants are valued at fair value on both a Solvency II and Statutory accounts basis. There are no valuation adjustments for Solvency II purposes.

Reinsurance Receivables: Reinsurance receivables represent amounts owed from policyholders. These are valued at fair value on both a Solvency II and statutory account basis. On a Solvency II basis, the receivable amounts that are not overdue are discounted to present value and reclassified to net off technical provisions, hence the valuation difference in the table above.

Cash and Cash equivalents: Cash and cash equivalents comprise of cash at bank and in hand and short term deposits with an original maturity date of three months or less. These are valued at fair value by the relevant financial institution, and the Company receives monthly statements at the period end to confirm the balances held. Balances have been translated to US Dollar using the year end exchange rate where appropriate. There are no significant estimates or judgements used in valuing cash holdings due to the nature of the asset. There are no valuation differences between Solvency II and the statutory accounts value.

Any other assets: Any other assets relate to accrued interest on Investments which is measured at fair value. As noted above, the difference in valuation relates to the allocation of accrued interest which for the purposes of Solvency II has been included within Investments.

5.2. TECHNICAL PROVISIONS

5.2.1. Valuation of Technical Provisions

The valuation of technical provisions for solvency purposes is performed in line with Articles 76-83 of Directive 2009/138/EC and is shown below. A summary is shown of the valuation at the beginning and end of the year below.

As can be seen below, there has been an increase in the net technical provisions over the year. This is driven by the Premium Provisions, however this largely relates to the SII operating expenses for the duration of the liabilities, which are assessed to be greater than assessed last year, this makes up \$3,063k of the technical provisions (relative to \$2,137k last year). Excluding this, there has been little movement in the claims provision, while the premium provision and risk margin now includes allowance for the new legally obliged business at 1/1/2021.

2020 Year End Technical Provisions

Technical Provisions	Marine, aviation and transport insurance	Credit & Suretyship Insurance	Fire and other damage to property insurance	Non-proportional property reinsurance	Total
Premium Provisions					
Gross - Total	-	567,049	-	2,022,302	2,589,351
Gross - direct business	-	-	-	-	-
Gross - accepted proportional reinsurance business	-	567,049	-	-	567,049
Gross - accepted non-proportional reinsurance business	-	-	-	2,022,302	2,022,302
Total recoverable from reinsurance/SPV and Finite Re before the adjustment for expected losses due to counterparty default	-	127,544	-	113,928	13,616
Net Best Estimate of Premium Provisions	-	439,505	-	2,136,230	2,575,735
Claim Provisions					
Gross - Total	1,665	385,208	2,612	659,442	1,048,926
Gross - direct business	-	-	-	-	-
Gross - accepted proportional reinsurance business	1,665	385,208	2,612	-	389,484
Gross - accepted non-proportional reinsurance business	-	-	-	659,442	659,442
Total recoverable from reinsurance/SPV and Finite Re after the adjustment for expected losses due to counterparty default	779	188,370	833	316,130	506,112
Net Best Estimate of Claims Provisions	886	196,838	1,779	343,312	542,814
Total Best estimate - gross	1,665	952,256	2,612	2,681,745	3,638,277
Total Best estimate - net	886	636,342	1,779	2,479,542	3,118,549
Risk margin	130	93,509	261	364,364	458,264

2019 Year End Technical Provisions

Technical Provisions	Marine, aviation and transport insurance	Credit & Suretyship Insurance	Fire and other damage to property insurance	Non-proportional property reinsurance	Total
Premium Provisions					
Gross - Total	-	1,024,893	-	40,791	1,065,684
Gross - direct business	-	-	-	-	-
Gross - accepted proportional reinsurance business	-	1,024,893	-	-	1,024,893
Gross - accepted non-proportional reinsurance business	-	-	-	40,791	40,791
Total recoverable from reinsurance/SPV and Finite Re before the adjustment for expected losses due to counterparty default	-	77,763	-	16,005	61,758
Net Best Estimate of Premium Provisions	-	1,102,656	-	24,786	1,127,442
Claim Provisions					
Gross - Total	2,295	374,510	3,319	1,001,697	1,381,821
Gross - direct business	-	-	-	-	-
Gross - accepted proportional reinsurance business	2,295	374,510	3,319	-	380,124
Gross - accepted non-proportional reinsurance business	-	-	-	1,001,697	1,001,697
Total recoverable from reinsurance/SPV and Finite Re after the adjustment for expected losses due to counterparty default	776	131,244	1,121	341,572	474,713
Net Best Estimate of Claims Provisions	1,519	243,267	2,197	660,125	907,108
Total Best estimate - gross	2,295	1,399,403	3,319	1,042,488	2,447,504
Total Best estimate - net	1,519	1,345,922	2,197	684,911	2,034,550
Risk margin	255	225,836	369	114,923	341,383

The best estimate calculation of claims and premiums provisions is split into separate calculations:

- Earned business: This relates to the earned business on incepted contracts and makes up claims provisions.
- Unearned business: This relates to unearned business on incepted contracts and makes up a component of premium provisions.
- Future business: This relates to future premium on incepted business and un-incepted legally obliged business incepting after the valuation date and makes up the remaining component of premiums provisions.
- Additional Solvency II expenses are assumed to apply to earned, unearned and future claims. This is an additional provision which was not included last year. This was added to calculate the technical provisions in line with the methodology used in the wider Group. They cover the following items:
 - Administration cost, including salaries, property costs, IT costs and expenses in relation to the management/administration of (re)insurance contracts
 - Other administration costs, such as consulting costs and global allocated re-charges
 - Investment management expenses.

Claims provisions - earned	Premium Provisions – unearned and future
<ul style="list-style-type: none"> ▪ - Gross Premiums receivable ▪ + RI Premiums payable ▪ + Gross Claims ▪ - RI Claims ▪ + RI bad debt ▪ + Expenses 	<ul style="list-style-type: none"> ▪ - Gross Premiums receivable ▪ + RI Premiums payable ▪ + Gross Claims ▪ - RI Claims ▪ + RI bad debt ▪ + Expenses ▪ This includes future legally obliged business (un-incepted business)
Other components	
<ul style="list-style-type: none"> • Events Not in Data Set (“ENIDS”) <ul style="list-style-type: none"> • Risk Margin • Discounting 	

5.2.1.1. Premiums Provision

Premium provisions relate to unearned and future business including bound but not incepted contracts (“BBNI”). An estimate of unearned and future losses is made by applying the expected loss ratio to the unearned and future premium. An estimate of additional Solvency II expenses and Unallocated Loss Adjustment Expense (“ULAE”) in relation to these claims is also included, as is a bad debt provision in relation to recoveries we may not receive. Unearned and future premiums receivable and unearned and future ceded premiums payable are included within the premium provision. The premium provision is discounted to take into account the time value of money. Since we consider the full distribution of scenarios, we do not add on an allowance for events not in data since we believe it is included within our expected loss ratio.

5.2.1.2. Claims Provision

The claims provisions are related to earned business. Gross and ceded earned claims are included in the claims provision along with an estimate of ULAE and bad debt. It is assumed that all earned premiums have been received. These reserves are discounted.

5.2.1.3. Risk Margin

A risk margin is included as part of the technical provisions calculation. This is equivalent to the theoretical amount needed to transfer the existing liabilities considered with technical provisions. It is calculated by using a cost of capital approach which considers the cost of providing an amount of eligible own funds equal to the SCR necessary to support current obligations over their lifetime.

The current adopted approach for the calculation of risk margin involves:

- 1) Calculate future capital requirements by time period for relevant risk types
- 2) Application of a cost of capital percentage (currently 6%) to the cashflow
- 3) Discounting of this cashflow stream to determine the risk margin.

5.2.2. Uncertainty in Valuing Technical Provisions

5.2.2.1. Assumptions

Certain assumptions are made in the process for calculating technical provisions – the most material of these to the Company being the SII expense provision, which is revised on annual basis. Limitations of assumptions are identified through the robust process which is in place to validate the technical provision data. Through this process, the appropriateness and materiality of assumptions is questioned and assumptions are updated where necessary.

Backtesting is used as part of each review of assumptions. For example, the key assumptions of Ultimate Loss Ratios (“ULRs”) are updated in light of past experience via the quarterly reserving process. The results of the quarterly reserving process are presented to the board.

5.2.2.2. Claims Provisions

As the claims provisions are closely tied to GAAP reserves, the same uncertainties underlie them both, the loss ratio and development curve assumptions, with the additional uncertainty underlying claims provisions relating to inadequacy of the yield curves for discounting.

The claims provisions are made up of outstanding loss reserves (“OSLR”) and Incurred But Not Reported (“IBNR”) (including Additional Case Reserves (“ACR”) and Event IBNR). The greatest source of uncertainty is the IBNR. In relation to specific events, an event IBNR reserve can be held. In relation to other claims, attritional IBNR is held and this is the single biggest component of reserves. The attritional IBNR is essentially an application of actuarial methods to calculate IBNR claims. It depends heavily on the adequacy of the assumptions used, the loss ratio assumption and claims development pattern assumptions. Any change to these assumptions impacts the attritional IBNR component of reserves.

5.2.2.3. Premium provisions

Claims underlying the premium provisions are derived by the application of a loss ratio to unearned and legally obliged future premiums on a class by class basis. The main uncertainty in premium provisions is therefore surrounding the choice of loss ratio to determine claims.

The Property cat loss ratio is particularly volatile, since there may be no cat losses, or the cat losses could be high, but when the premium is unearned, it is difficult to know whether there will be cat events or not. The Company is particularly exposed to property cat business and hence the results are volatile, however this is within the risk appetite for the Company.

The uncertainty around claims in premiums provisions is driven by the uncertainty around the loss ratio picks by class. Typically, it would be expected that property classes, with high cat exposure will initially have the most uncertainty around loss ratios. The contribution of the risk on business underlying premium provisions to the SCR is via premium risk and this is discussed further below.

5.2.2.4. Durations

The technical provisions process is able to provide the cashflows at a granular enough level to work out durations, separately by class, year of account and between the Technical Provision components. However, the payment patterns are based on benchmark data and may vary from the expectation. This would change the discount applied, however, due to the low yield environment we are currently in, we do not expect this to be a particularly significant uncertainty.

5.2.2.5. Sensitivity tests

The technical provisions process has the capacity to allow adjustments to certain assumptions for the purposes of producing results of sensitivity tests. These can be carried out each time the technical provisions process is run. Currently, the sensitivity tests carried out are:

- Increase all loss ratio assumptions by 10%
- Increase all loss ratio assumptions by 20%
- Increase spot rates for discounting by 1%

The impact of each sensitivity is immaterial relative to shareholder's equity, given the small relative magnitude of the current technical provisions.

5.2.3. Valuation Bases - Solvency II Versus Statutory Financial Statements

The most significant differences to the calculation of technical provisions under Solvency II compared to GAAP reserves are:

- Removal of all margins (whether explicit or implicit) from technical provisions leaving a true best estimate.
- Removal of the need to hold an “unearned premium reserve” replacing this with “premium provisions” which consider future cash inflows in addition to the corresponding outflows.
- Recognition of contracts on a “legal obligation basis” meaning any contracts entered into prior to the balance sheet date (such as Jan 1 renewals for the 31/12 submission) need to be considered as part of best estimate rather than only including incepted policies. Under Solvency II, policies to which the Company is committed but which have not yet incepted also need to be considered.
- The basis for recognising existing contracts will also impact reinsurance contracts and their expected cashflows.
- Consideration of Events Not In Data (“ENID”) which may not have previously been considered in the calculation of best estimates.
- Consideration of a cashflow basis for valuation of gross business and reinsurance.
- Introduction of discounting, leading to increased volatility in reserves.
- Introduction of the principle of a market consistent basis and calculation of a Risk Margin (or Market Value Margin).
- Valuation of liabilities segmented by Solvency II lines of business.
- Valuation of liabilities segmented by currency.
- Introduction of governance requirements for an explicit “Actuarial Function” with defined responsibilities.
- Introduction of explicit data requirements.
- Significant increase to documentation and validation requirements.
- Introduction of explicit links to other areas of Solvency II such as internal models.
- Introduction of the principle of proportionality that underlies the calculations.

5.2.4. Elective Adjustments Permitted by Directive 2009/138/EC

The Company does not apply the following elective treatments permitted by Directive 2009/138/EC:

- matching adjustment referred to in Article 77b;
- volatility adjustment referred to in Article 77d;
- transitional risk-free rate term structure referred to in Article 308c;
- transitional deduction referred to in Article 308d.

5.2.5. Other Material Information

5.2.5.1. Reinsurance Recoveries and Special Purpose Vehicles

Recoverables are included in the technical provisions. The claims provision recoverables mirror the recoveries we have in the Company's GAAP reporting but are discounted using the yield curves provided by EIOPA.

An estimate of recoveries on unearned and future business is calculated and included within the premium provision. These are also discounted. Since all reinsurance is proportional, we estimate the reinsurance recoveries as a proportion of the gross losses.

5.3. VALUATION OF OTHER LIABILITIES

5.3.1. Valuation Bases - Solvency II versus Statutory Financial Statements

Valuation of other liabilities for solvency purposes is performed in line with Article 75 of Directive 2009/138/EC. A summary is shown of the valuation at the beginning and end of the year below. There has been a decrease in other liabilities over the year as some of the outstanding payables have been settled since last year.

2020 Year End Other Liabilities

Other Liabilities (US\$)	Solvency II value	Statutory accounts value	Difference in Valuation
Deposits from reinsurers	14,679	14,679	0
Reinsurance payables	116,197	453,272	-337,076
Payables (trade, not insurance)	620,269	620,269	0
Any other liabilities, not elsewhere shown	67,946	485,228	-417,282
Total Other Liabilities	819,091	1,573,448	-754,357

2019 Year End Other Liabilities

Other Liabilities (US\$)	Solvency II value	Statutory accounts value	Difference in Valuation
Deposits from reinsurers	618	618	0
Reinsurance payables	376,146	1,091,332	-715,186
Payables (trade, not insurance)	1,659,352	1,659,352	0
Any other liabilities, not elsewhere shown	188,316	806,761	-618,445
Total Other Liabilities	2,224,433	3,558,063	-1,333,630

Deposits from reinsurers: Deposits from reinsurers are valued at fair value on both a Solvency II and Statutory accounts basis. There are no valuation adjustments for solvency purposes.

Insurance and reinsurance payables: Insurance and reinsurance payables represent amounts owed to both policyholders and Cedants. These are valued at fair value on both a Solvency II and statutory account basis. On a Solvency II basis, the payable amounts that are not overdue are discounted to present value and reclassified to net off technical provisions, hence the valuation difference in the table above.

Payables (trade, not insurance): Payables (trade, not insurance) relate to balances owed to other group companies in respect of service recharges to the Company. No estimation method, adjustments for future value or valuation judgements are required for these balances. There are no valuation adjustments for solvency purposes.

Any other liabilities, not elsewhere shown: Any other liabilities is made up of both accrued expenses and reinsurers' share of deferred acquisition costs. Accrued expenses are measured at fair value and there are no valuation adjustments for solvency purposes.

As noted in the Asset section above, deferred acquisition costs are costs arising from the conclusion of insurance contracts that are incurred during the reporting period but which relate to a subsequent reporting period and which are carried forward to subsequent reporting periods. Deferred acquisition costs (and reinsurers' share of deferred acquisition costs) are amortised over the period in which the related premiums are earned. Reinsurers' deferred acquisition costs are not recognised for Solvency II purposes hence the difference in valuation between Solvency II and the statutory accounts value.

6. CAPITAL MANAGEMENT

The RenaissanceRe business is operated as an integrated system that enables us to pursue three competitive advantages: superior customer relationships, superior risk selection, and superior capital management. With respect to our superior capital management, we seek to write as much attractively priced business as is available to us and then manage our capital accordingly by matching the right risk to the right capital at the right time.

Capital, in aggregate, is managed at the RenaissanceRe group level. RenaissanceRe's subsidiaries maintain capital levels that are sufficient for the risk exposure at the legal entity level. Excess capital is usually returned to the parent company and if additional capital injections are necessary, the parent company will capitalize the subsidiary accordingly.

There is a net worth maintenance agreement between Renaissance Reinsurance and the Company whereby Renaissance Reinsurance has agreed to cause the Company to maintain a minimum capital and surplus position as required under regulatory standards through capital contributions to the Company. This net worth maintenance agreement enables Renaissance Reinsurance to provide capital to the Company should the need arise.

At the group level, RenaissanceRe capital management activities serve defined goals with defined objectives. We generally seek to raise capital when we forecast an increased demand in the market, at times by accessing capital through joint ventures or other structures, and seek to return capital to shareholders or joint venture investors when the demand for coverages appears to decline and when we believe a return of capital would be beneficial to RenaissanceRe shareholders or joint venture investors.

6.1. OWN FUNDS

6.1.1. Management of Own Funds

The investment of the Company's own funds is managed in a prudent approach and is consistent with RenaissanceRe Group's approach to managing its capital base. As stated above, the level of own funds is maintained at a level that is in excess of the required capital that is reasonably expected under the Standard Formula.

6.1.2. Own Funds Position

The Own Funds have reduced as a result of the calendar year loss, driven by operating expenses. A summary is shown of the valuation at the beginning and end of the year below.

2020 Year End Own Funds

Own Funds		Total	Tier 1 - unrestricted
Basic own funds before deduction for participations in other financial sector as foreseen in article 68 of Delegated Regulation 2015/35			
Ordinary share capital (gross of own shares)	R0010	2,000,000	2,000,000
Reconciliation reserve	R0130	-10,636,670	-10,636,670
Other own fund items approved by the supervisory authority as basic own funds not specified above	R0180	17,951,000	17,951,000
Total basic own funds after deductions	R0290	9,314,330	9,314,330
Total eligible own funds to meet the SCR	R0540	9,314,330	9,314,330
Total eligible own funds to meet the MCR	R0550	9,314,330	9,314,330
SCR	R0580	1,593,430	
MCR	R0600	4,211,280	
Ratio of Eligible own funds to SCR	R0620	585%	
Ratio of Eligible own funds to MCR	R0640	221%	

2019 Year End Own Funds

Own Funds		Total	Tier 1 - unrestricted
Basic own funds before deduction for participations in other financial sector as foreseen in article 68 of Delegated Regulation 2015/35			
Ordinary share capital (gross of own shares)	R0010	2,000,000	2,000,000
Reconciliation reserve	R0130	-8,978,409	-8,978,409
Other own fund items approved by the supervisory authority as basic own funds not specified above	R0180	17,951,000	17,951,000
Total basic own funds after deductions	R0290	10,972,591	10,972,591
Total eligible own funds to meet the SCR	R0540	10,972,591	10,972,591
Total eligible own funds to meet the MCR	R0550	10,972,591	10,972,591
SCR	R0580	1,428,187	
MCR	R0600	4,015,440	
Ratio of Eligible own funds to SCR	R0620	768%	
Ratio of Eligible own funds to MCR	R0640	273%	

All of the Own Funds are within the Tier 1 category meaning that these can be easily called upon to pay any debts that the entity may incur. The Basic Own Funds are made up of the following items:

- Ordinary Share Capital of \$2.00m
- Member's Contributions of \$18.0m
- The reconciliation reserve of -\$10.6m – this has decreased from the -\$9.0m reported last year.

These funds make up the Excess of Assets over Liabilities on the balance sheet. The reconciliation reserve is the balancing item to ensure that the Ordinary Share Capital and the Member's Contributions make up the surplus funds. This number can be considered closely related to the retained earnings in the statutory accounts. The Company does not hold any Ancillary Own Funds.

6.1.3. Own Funds Eligible to Cover SCR

The amount of Eligible Own Funds to meet the SCR is equal to the Basic Own Funds reported. All of the Basic Own Funds are made up of Tier 1 capital available to meet the SCR.

6.1.4. Own Funds Eligible to Cover MCR

The amount of Eligible Own Funds to meet the MCR is also equal to the Basic Own Funds reported. All of the Basic Own Funds are made up of Tier 1 capital, which can be used to meet the MCR.

6.1.5. Reconciliation of Equity from Statutory Financial Statements to Solvency II

The following table reconciles the differences between the equity in the financial statements and the excess of assets over liabilities as calculated for solvency purposes as at 31st December 2020.

	\$'000
Equity per financial statements:	
Called up share capital	2,000
Other reserves	17,951
Retained earnings	-7,190
Total Shareholders' funds	12,760
Difference in the valuation of assets	-1,649
Difference in the valuation of liabilities	1,797
SII Value of excess of assets over liabilities	9,314

6.2. CAPITAL REQUIREMENTS

6.2.1. Solvency Capital Requirement

The Solvency Capital Requirement has increased as a result of new catastrophe risk exposed business being written at 1/1/2021. A summary is shown of the valuation at the beginning and end of the year below. A breakdown of the SCR by risk category is given in the table below and discussed in Section 4 of this report.

Movement in the SCR (USD\$)	Year End 2020	Year End 2019	Difference
Market risk	985,521	941,136	44,385
Non-life underwriting risk	665,463	489,301	176,162
Health underwriting risk	0	0	0
Counterparty default risk	313,332	362,867	-49,535
Diversification	-480,034	-438,542	-41,492
Basic Solvency Capital Requirement	1,484,282	1,354,762	129,520
Operational risk	109,148	73,425	35,723
Solvency Capital Requirement	1,593,430	1,428,187	165,243

- Currency Risk within Market Risk remains the largest driver of the SCR - this has remained fairly stable (\$867k vs \$801k) despite the primary exposure changing from excess EUR assets to excess GBP liabilities.

- Catastrophe Risk within non-life underwriting has increased from ~ 28k to \$506k, due to ~ \$2m gross (~\$200k net) of new non-proportional property deals written at 1/1/2021, relative to no deals being written in 2020. The residual underwriting exposure relates to unearned Credit & Surety deals, which has not changed since last year. This is the main driver of the SCR increase over the year.
- Premium and Reserve Risk volumes within non-life underwriting risk have reduced, however this is due to the less of the SII expenses now being allocated to claims provision which contributes to the Reserve Risk volume.
- Counterparty default risk has reduced due to smaller cash balances however this is offset by increased exposure to reinsurance counterparties due to 90% intra-group quota share on new deals highlighted above.
- Operational Risk has increased in proportion to the increase in Gross Best Estimate Technical Provisions shown above.

6.2.2. Minimum Capital Requirement

The MCR amount of \$4.21m, as shown in the table below, is equal to the Absolute Floor (€3.6m for reinsurance undertakings) converted to USD at the prescribed exchange rate of €1 = \$1.1698. Given the absolute floor is greater than the SCR of \$1.59m, the MCR is therefore the binding constraint. The MCR has increased from last year's amount of \$4.02m. This is due to the strengthening of the EUR/USD exchange rate over the period.

Minimum Capital Requirement (USD\$) - 2020 Year End	
Linear MCR	572,864
SCR	1,593,430
MCR cap	717,044
MCR floor	398,358
Combined MCR	572,864
Absolute floor of the MCR	4,211,280
Minimum Capital Requirement	4,211,280

Minimum Capital Requirement (USD\$) - 2019 Year End	
Linear MCR	383,945
SCR	1,428,187
MCR cap	642,684
MCR floor	357,047
Combined MCR	383,945
Absolute floor of the MCR	4,015,440
Minimum Capital Requirement	4,015,440

6.2.3. Use of Simplified Calculations

The solvency needs of the Company are assessed using the Solvency II standard formula as a basis to calculate a Solvency Capital Requirement. The calculations are undertaken using a template which included some simplifications to the standard formula approach. However, these do not have a significant impact on the overall results. The simplifications are as follows:

- CRESTA zone inputs for European Natural Catastrophe Risk: The template does not capture sum insureds of European countries by CRESTA zone as specified in the Delegated Acts. The additional diversification benefit is not deemed to be sufficiently material to warrant the significantly more detailed input requirements. The Company does not have any earned premium in the next 12 months which is in the Direct and Proportional classes which are represented on the European Natural Catastrophe tab. Therefore, this has no impact on the SCR calculation.
- Duration input for Interest Rate Risk: The template collects asset duration within Interest Rate risk rather than a full listing of the cashflows occurring on the assets included in this module. This has little impact on the SCR as interest rate risk is a small component of the SCR calculation.
- Risk Mitigating Effect of reinsurance in Counterparty Default Risk: In line with Article 107 of the Delegated Acts text, the template has applied the simplification for Risk Mitigating Effect of reinsurance to simplify the calculation and inputs required for the calculation. This derives a Gross Underwriting Risk SCR from which the Net Underwriting Risk SCR is deducted to estimate the allowance of reinsurance on the SCR. This amount is apportioned across the current reinsurance exposures in line with the outstanding recoverables. This simplification has an immaterial impact on the counterparty default risk SCR and therefore the overall SCR calculation.

6.2.4. Use of Elective Parameters

The Company does not utilise any undertaking-specific parameters.

6.2.5. Inputs to MCR

The inputs to the MCR are shown in the table below. These are made up of the net of reinsurance best estimate technical provisions and the net written premium in the last twelve months for each Solvency II line of business. The linear MCR which is calculated based on these amounts is approximately \$573k, which is much less than the Absolute Floor of \$4.21m.

2020 Year End MCR Inputs

Minimum Capital Requirements Inputs (USD\$)		Net (of reinsurance/SPV) best estimate and TP calculated as a whole	Net (of reinsurance) written premiums in the last 12 months
Medical expense insurance and proportional reinsurance	R0020	0	0
Income protection insurance and proportional reinsurance	R0030	0	0
Workers' compensation insurance and proportional reinsurance	R0040	0	0
Motor vehicle liability insurance and proportional reinsurance	R0050	0	0
Other motor insurance and proportional reinsurance	R0060	0	0
Marine, aviation and transport insurance and proportional reinsurance	R0070	886	0
Fire and other damage to property insurance and proportional reinsurance	R0080	1,779	0
General liability insurance and proportional reinsurance	R0090	0	0
Credit and suretyship insurance and proportional reinsurance	R0100	636,342	-10,981
Legal expenses insurance and proportional reinsurance	R0110	0	0
Assistance and proportional reinsurance	R0120	0	0
Miscellaneous financial loss insurance and proportional reinsurance	R0130	0	0
Non-proportional health reinsurance	R0140	0	0
Non-proportional casualty reinsurance	R0150	0	0
Non-proportional marine, aviation and transport reinsurance	R0160	0	0
Non-proportional property reinsurance	R0170	2,479,542	121

2019 Year End MCR Inputs

Minimum Capital Requirements Inputs (USD\$)		Net (of reinsurance/SPV) best estimate and TP calculated as a whole	Net (of reinsurance) written premiums in the last 12 months
Medical expense insurance and proportional reinsurance	R0020	0	0
Income protection insurance and proportional reinsurance	R0030	0	0
Workers' compensation insurance and proportional reinsurance	R0040	0	0
Motor vehicle liability insurance and proportional reinsurance	R0050	0	0
Other motor insurance and proportional reinsurance	R0060	0	0
Marine, aviation and transport insurance and proportional reinsurance	R0070	1,519	0
Fire and other damage to property insurance and proportional reinsurance	R0080	2,197	0
General liability insurance and proportional reinsurance	R0090	0	0
Credit and suretyship insurance and proportional reinsurance	R0100	1,345,922	52,000
Legal expenses insurance and proportional reinsurance	R0110	0	0
Assistance and proportional reinsurance	R0120	0	0
Miscellaneous financial loss insurance and proportional reinsurance	R0130	0	0
Non-proportional health reinsurance	R0140	0	0
Non-proportional casualty reinsurance	R0150	0	0
Non-proportional marine, aviation and transport reinsurance	R0160	0	0
Non-proportional property reinsurance	R0170	684,911	76,000

6.3. INTERNAL MODEL

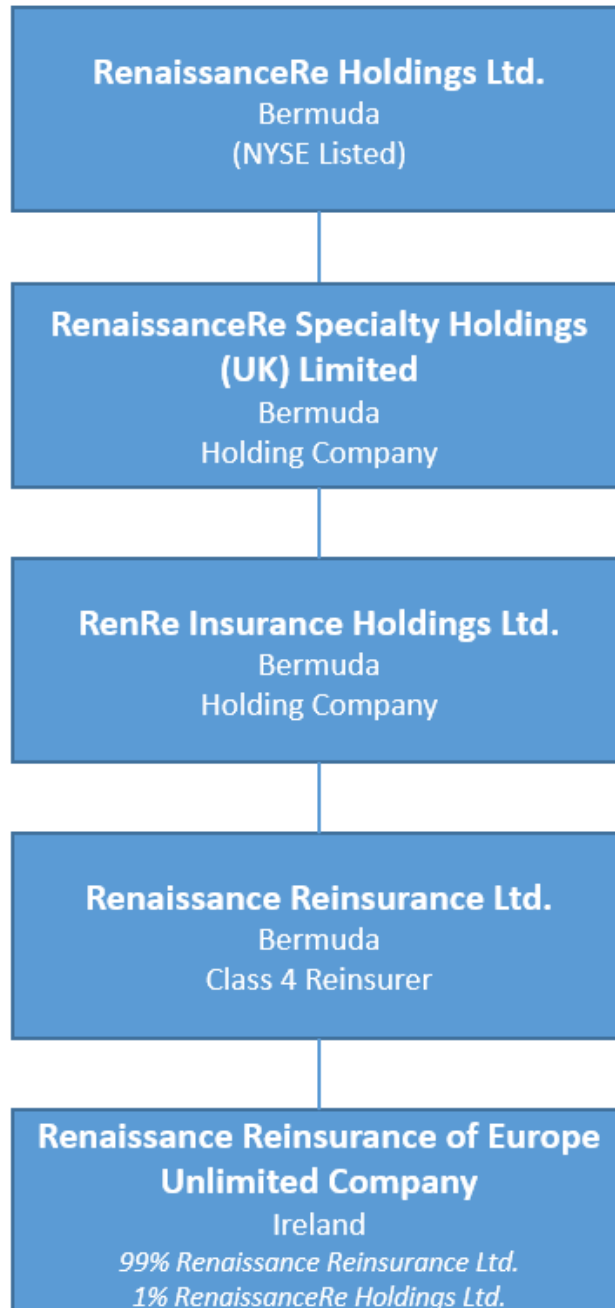
The solvency needs of the Company are assessed using the Solvency II standard formula basis to calculate a Solvency Capital Requirement.

6.4. NON-COMPLIANCE

The Company has maintained capital in excess of the Minimum Capital Requirement and Solvency Capital Requirement without exception.

APPENDIX ONE

COMPANY POSITION WITHIN RENAISSANCERE GROUP



APPENDIX TWO

DISCLOSURE QRTs

The following QRTs are required for the SFCR and are disclosed within this appendix:

- S.02.01 Balance Sheet
- S.05.01 Premiums, claims and expenses by Solvency II line of business
- S.05.02 Premiums, claims and expenses by country
- S.17.01 Technical Provisions by Solvency II line of business
- S.19.01 Non-life claims triangles
- S.23.01 Own Funds
- S.25.01 Solvency Capital Requirement for undertakings on Standard Formula
- S.28.01 Minimum Capital Requirement

S.02.01.02

Balance sheet

	Solvency II value	
	C0010	
Assets		
Intangible assets	R0030	-
Deferred tax assets	R0040	-
Pension benefit surplus	R0050	-
Property, plant & equipment held for own use	R0060	-
Investments (other than assets held for index-linked and unit-linked)	R0070	11,964,204
Property (other than for own use)	R0080	-
Holdings in related undertakings, including participations	R0090	-
Equities	R0100	-
Equities - listed	R0110	-
Equities - unlisted	R0120	-
Bonds	R0130	11,766,858
Government Bonds	R0140	9,349,034
Corporate Bonds	R0150	2,417,824
Structured notes	R0160	-
Collateralised securities	R0170	-
Collective Investments Undertakings	R0180	197,345
Derivatives	R0190	-
Deposits other than cash equivalents	R0200	-
Other investments	R0210	-
Assets held for index-linked and unit-linked contracts	R0220	-
Loans and mortgages	R0230	-
Loans on policies	R0240	-
Loans and mortgages to individuals	R0250	-
Other loans and mortgages	R0260	-
Reinsurance recoverables from:	R0270	519,729
Non-life and health similar to non-life	R0280	519,729
Non-life excluding health	R0290	519,729
Health similar to non-life	R0300	-
Life and health similar to life, excluding health and index-linked and	R0310	-
Health similar to life	R0320	-
Life excluding health and index-linked and unit-linked	R0330	-
Life index-linked and unit-linked	R0340	-
Deposits to cedants	R0350	2,221
Insurance and intermediaries receivables	R0360	-
Reinsurance receivables	R0370	13,588
Receivables (trade, not insurance)	R0380	-
Own shares (held directly)	R0390	-
Amounts due in respect of own fund items or initial fund called up	R0400	-
Cash and cash equivalents	R0410	1,723,096
Any other assets, not elsewhere shown	R0420	7,125
Total assets	R0500	14,229,962

S.02.01.02

Balance sheet

Liabilities

Technical provisions – non-life

Technical provisions – non-life (excluding health)

TP calculated as a whole

Best Estimate

Risk margin

Technical provisions - health (similar to non-life)

TP calculated as a whole

Best Estimate

Risk margin

Technical provisions - life (excluding index-linked and unit-linked)

Technical provisions - health (similar to life)

TP calculated as a whole

Best Estimate

Risk margin

Technical provisions – life (excluding health and index-linked and unit-linked)

TP calculated as a whole

Best Estimate

Risk margin

Technical provisions – index-linked and unit-linked

TP calculated as a whole

Best Estimate

Risk margin

Contingent liabilities

Provisions other than technical provisions

Pension benefit obligations

Deposits from reinsurers

Deferred tax liabilities

Derivatives

Debts owed to credit institutions

Financial liabilities other than debts owed to credit institutions

Insurance & intermediaries payables

Reinsurance payables

Payables (trade, not insurance)

Subordinated liabilities

Subordinated liabilities not in BOF

Subordinated liabilities in BOF

Any other liabilities, not elsewhere shown

Total liabilities

Excess of assets over liabilities

	Solvency II value
	C0010
R0510	4,096,542
R0520	4,096,542
R0530	-
R0540	3,638,277
R0550	458,264
R0560	-
R0570	-
R0580	-
R0590	-
R0600	-
R0610	-
R0620	-
R0630	-
R0640	-
R0650	-
R0660	-
R0670	-
R0680	-
R0690	-
R0700	-
R0710	-
R0720	-
R0740	-
R0750	-
R0760	-
R0770	14,679
R0780	-
R0790	-
R0800	-
R0810	-
R0820	-
R0830	116,197
R0840	620,269
R0850	-
R0860	-
R0870	-
R0880	67,946
R0900	4,915,632
R1000	9,314,330

S.05.01.02

Premiums, claims and expenses by line of business

Non-Life & Accepted non-proportional reinsurance

	Line of Business for: non-life insurance and reinsurance obligations (direct business and accepted proportional reinsurance)												Line of Business for: accepted non-proportional				Total
	Medical expense insurance	Income protection insurance	Workers' compensation insurance	Motor vehicle liability insurance	Other motor insurance	Marine, aviation and transport insurance	Fire and other damage to property insurance	General liability insurance	Credit and suretyship insurance	Legal expenses insurance	Assistance	Miscellaneous financial loss	Health	Casualty	Marine, aviation, transport	Property	
	C0010	C0020	C0030	C0040	C0050	C0060	C0070	C0080	C0090	C0100	C0110	C0120	C0130	C0140	C0150	C0160	
Premiums written																	
Gross - Direct Business	R0110	-	-	-	-	-	-	-	-	-	-	-	-	-	-	-	-
Gross - Proportional reinsurance accepted	R0120	-	-	-	-	-	-	-	-	-	-	-	-	-	-	-	-
Gross - Non-proportional reinsurance accepted	R0130												-	-	-	10,882	10,882
Reinsurers' share	R0140	-	-	-	-	-	-	-	94,623	-	-	-	-	-	-	9,794	84,829
Net	R0200	-	-	-	-	-	-	-	22,244	-	-	-	-	-	-	1,088	21,156
Premiums earned																	
Gross - Direct Business	R0210	-	-	-	-	-	-	-	-	-	-	-	-	-	-	-	-
Gross - Proportional reinsurance accepted	R0220	-	-	-	-	-	-	-	347,832	-	-	-	-	-	-	-	347,832
Gross - Non-proportional reinsurance accepted	R0230												-	-	-	34,950	34,950
Reinsurers' share	R0240	-	-	-	-	-	-	-	343,871	-	-	-	-	-	-	34,552	378,423
Net	R0300	-	-	-	-	-	-	-	3,962	-	-	-	-	-	-	398	4,360
Claims incurred																	
Gross - Direct Business	R0310	-	-	-	-	-	-	-	-	-	-	-	-	-	-	-	-
Gross - Proportional reinsurance accepted	R0320	-	-	-	-	-	-	-	182,412	-	-	-	-	-	-	-	182,412
Gross - Non-proportional reinsurance accepted	R0330												-	-	-	62,918	62,918
Reinsurers' share	R0340	-	-	-	-	-	-	-	172,818	-	-	-	-	-	-	52,242	120,576
Net	R0400	-	-	-	-	-	-	-	9,594	-	-	-	-	-	-	10,676	1,082
Changes in other technical provisions																	
Gross - Direct Business	R0410	-	-	-	-	-	-	-	-	-	-	-	-	-	-	-	-
Gross - Proportional reinsurance accepted	R0420	-	-	-	-	-	-	-	-	-	-	-	-	-	-	-	-
Gross - Non-proportional reinsurance accepted	R0430												-	-	-	-	-
Reinsurers' share	R0440	-	-	-	-	-	-	-	-	-	-	-	-	-	-	-	-
Net	R0500	-	-	-	-	-	-	-	-	-	-	-	-	-	-	-	-
Expenses incurred																	
Other expenses	R1200								888,952							88,245	977,197
Total expenses	R1300																977,197

S.05.02.01.01

Non-life obligations for home country

		Home country	Country (by amount of gross premiums written)	Country (by amount of gross premiums written)	Country (by amount of gross premiums written)	Country (by amount of gross premiums written)	Total for top 5 countries and home country (by amount of gross premiums written)
			FR	BM	LU	BE	
		C0080	C0090	C0090	C0090	C0090	C0140
Premiums written							
Gross - Direct Business	R0110		0	0	0	0	0
Gross - Proportional reinsurance accepted	R0120		0	0	-116,867	0	-116,867
Gross - Non-proportional reinsurance accepted	R0130		1,210	0	0	9,672	10,882
Reinsurers' share	R0140		1,089	0	-94,623	8,705	-84,829
Net	R0200	0	121	0	-22,244	967	-21,156
Premiums earned							
Gross - Direct Business	R0210		0	0	0	0	0
Gross - Proportional reinsurance accepted	R0220		0	0	347,832	0	347,832
Gross - Non-proportional reinsurance accepted	R0230		1,210	257	23,811	9,672	34,950
Reinsurers' share	R0240		1,196	254	367,410	9,562	378,423
Net	R0300	0	14	3	4,233	110	4,360
Claims incurred							
Gross - Direct Business	R0310		0	0	0	0	0
Gross - Proportional reinsurance accepted	R0320		0	0	182,412	0	182,412
Gross - Non-proportional reinsurance accepted	R0330		0	-61,613	-1,305	0	-62,918
Reinsurers' share	R0340		0	-51,158	171,734	0	120,576
Net	R0400	0	0	-10,455	9,373	0	-1,082
Changes in other technical provisions							
Gross - Direct Business	R0410		0	0	0	0	0
Gross - Proportional reinsurance accepted	R0420		0	0	0	0	0
Gross - Non-proportional reinsurance accepted	R0430		0	0	0	0	0
Reinsurers' share	R0440		0	0	0	0	0
Net	R0500	0	0	0	0	0	0
Expenses incurred	R0550		3,159	672	948,120	25,248	977,197
Other expenses	R1200						
Total expenses	R1300						977,197

S.17.01.02

Non-Life Technical Provisions

		Direct business and accepted proportional reinsurance											Accepted non-proportional reinsurance				Total Non-Life obligation	
		Medical expense insurance	Income protection insurance	Workers' compensation insurance	Motor vehicle liability insurance	Other motor insurance	Marine, aviation and transport insurance	Fire and other damage to property insurance	General liability insurance	Credit and suretyship insurance	Legal expenses insurance	Assistance	Miscellaneous financial loss	Non-proportional health reinsurance	Non-proportional casualty reinsurance	Non-proportional marine, aviation and transport reinsurance		Non-proportional property reinsurance
		C0020	C0030	C0040	C0050	C0060	C0070	C0080	C0090	C0100	C0110	C0120	C0130	C0140	C0150	C0160		C0170
Technical provisions calculated as a whole	R0010	-	-	-	-	-	-	-	-	-	-	-	-	-	-	-	-	-
Total Recoverables from reinsurance/SPV and Finite Re after the adjustment for expected losses due to counterparty default associated to TP calculated as a whole																		
	R0050	-	-	-	-	-	-	-	-	-	-	-	-	-	-	-	-	-
Technical provisions calculated as a sum of BE and RM																		
Best estimate																		
<u>Premium provisions</u>																		
Gross	R0060	-	-	-	-	-	-	-	567,049	-	-	-	-	-	-	-	2,022,302	2,589,351
Total recoverable from reinsurance/SPV and Finite Re after the adjustment for expected losses due to counterparty default																		
	R0140	-	-	-	-	-	-	-	127,544	-	-	-	-	-	-	-	113,928	13,616
Net Best Estimate of Premium Provisions	R0150	-	-	-	-	-	-	-	439,505	-	-	-	-	-	-	-	2,136,230	2,575,735
<u>Claims provisions</u>																		
Gross	R0160	-	-	-	-	-	1,665	2,612	-	385,208	-	-	-	-	-	-	659,442	1,048,926
Total recoverable from reinsurance/SPV and Finite Re after the adjustment for expected losses due to counterparty default																		
	R0240	-	-	-	-	-	779	833	-	188,370	-	-	-	-	-	-	316,130	506,112
Net Best Estimate of Claims Provisions	R0250	-	-	-	-	-	886	1,779	-	196,838	-	-	-	-	-	-	343,312	542,814
Total Best estimate - gross	R0260	-	-	-	-	-	1,665	2,612	-	952,256	-	-	-	-	-	-	2,681,745	3,638,277
Total Best estimate - net	R0270	-	-	-	-	-	886	1,779	-	636,342	-	-	-	-	-	-	2,479,542	3,118,549
Risk margin	R0280	-	-	-	-	-	130	261	-	93,509	-	-	-	-	-	-	364,364	458,264
Amount of the transitional on Technical Provisions																		
Technical Provisions calculated as a whole	R0290	-	-	-	-	-	-	-	-	-	-	-	-	-	-	-	-	-
Best estimate	R0300	-	-	-	-	-	-	-	-	-	-	-	-	-	-	-	-	-
Risk margin	R0310	-	-	-	-	-	-	-	-	-	-	-	-	-	-	-	-	-
Technical provisions - total																		
Technical provisions - total	R0320	-	-	-	-	-	1,795	2,873	-	1,045,766	-	-	-	-	-	-	3,046,108	4,096,542
Recoverable from reinsurance contract/SPV and Finite Re after the adjustment for expected losses due to counterparty default - total																		
	R0330	-	-	-	-	-	779	833	-	315,914	-	-	-	-	-	-	202,203	519,729
Technical provisions minus recoverables from reinsurance/SPV and Finite Re - total	R0340	-	-	-	-	-	1,016	2,040	-	729,851	-	-	-	-	-	-	2,843,905	3,576,813

S.19.01.21

Non-life Insurance Claims Information

Total Non-Life Business

Accident year / Underwriting year	Z0010	Underwriting year
-----------------------------------	--------------	-------------------

Gross Claims Paid (non-cumulative)
(absolute amount)

Year	Development year											In Current year	Sum of years (cumulative)		
	0	1	2	3	4	5	6	7	8	9	10 & +			C0170	C0180
	C0010	C0020	C0030	C0040	C0050	C0060	C0070	C0080	C0090	C0100	C0110				
Prior	R0100												R0100	-	-
N-9	R0160	-	-	-	-	-	-	-	-	-	-		R0160	-	-
N-8	R0170	- 102,466	1,370,510	800,439	230,415	129,940	- 23,774	430,102	-	-		R0170	-	2,835,165	
N-7	R0180	22,850	1,421,052	782,709	236,420	- 14,211	8,803	249,846	-			R0180	-	2,707,469	
N-6	R0190	-	-	-	-	-	-					R0190	-	-	
N-5	R0200	-	-	-	-	-						R0200	-	-	
N-4	R0210	-	-	-	-							R0210	-	-	
N-3	R0220	-	-	-	89,459							R0220	89,459	89,459	
N-2	R0230	-	-	53,022								R0230	53,022	53,022	
N-1	R0240	-	627									R0240	627	627	
N	R0250	-										R0250	-	-	
Total	R0260												143,108	5,685,742	

Gross undiscounted Best Estimate Claims Provisions
(absolute amount)

Year	Development year											Year end (discounted data)	
	0	1	2	3	4	5	6	7	8	9	10 & +		C0360
	C0200	C0210	C0220	C0230	C0240	C0250	C0260	C0270	C0280	C0290	C0300		
Prior	R0100										4,272	R0100	4,276
N-9	R0160	-	-	-	-	-	-	-	-	-		R0160	-
N-8	R0170	-	-	-	-	488,910	664,402	-	-	-		R0170	-
N-7	R0180	-	-	-	387,827	527,116	398,908	-	-			R0180	-
N-6	R0190	-	-	288	-	-	-	-				R0190	-
N-5	R0200	-	212,669	271,025	287,648	510,078	364,454					R0200	369,729
N-4	R0210	35,095	214,891	239,945	213,640	108,818						R0210	105,213
N-3	R0220	67,082	245,338	325,157	147,434							R0220	142,858
N-2	R0230	54,365	248,009	77,884								R0230	75,578
N-1	R0240	199,558	362,433									R0240	351,272
N	R0250	-										R0250	-
Total	R0260												1,048,926

S.23.01.01

Own funds

		Total	Tier 1 - unrestricted	Tier 1 - restricted	Tier 2	Tier 3
		C0010	C0020	C0030	C0040	C0050
Basic own funds before deduction for participations in other financial sector as foreseen in article 68 of Delegated Regulation 2015/35						
Ordinary share capital (gross of own shares)	R0010	2,000,000	2,000,000			
Share premium account related to ordinary share capital	R0030	0	0			
Initial funds, members' contributions or the equivalent basic own - fund item for mutual and mutual-type undertakings	R0040	0	0			
Subordinated mutual member accounts	R0050	0				
Surplus funds	R0070	0	0			
Preference shares	R0090	0				
Share premium account related to preference shares	R0110	0				
Reconciliation reserve	R0130	-10,636,670	-10,636,670			
Subordinated liabilities	R0140	0				
An amount equal to the value of net deferred tax assets	R0160	0				
Other own fund items approved by the supervisory authority as basic own funds not specified above	R0180	17,951,000	17,951,000			
Own funds from the financial statements that should not be represented by the reconciliation reserve and do not meet the criteria to be classified as Solvency II own funds						
Own funds from the financial statements that should not be represented by the reconciliation reserve and do not meet the criteria to be classified as Solvency II own funds	R0220					
Deductions						
Deductions for participations in financial and credit institutions	R0230	0				
Total basic own funds after deductions	R0290	9,314,330	9,314,330	0	0	0
Ancillary own funds						
Unpaid and uncalled ordinary share capital callable on demand	R0300	0				
Unpaid and uncalled initial funds, members' contributions or the equivalent basic own fund item for mutual and mutual - type undertakings, callable on demand	R0310	0				
Unpaid and uncalled preference shares callable on demand	R0320	0				
A legally binding commitment to subscribe and pay for subordinated liabilities on demand	R0330	0				
Letters of credit and guarantees under Article 96(2) of the Directive 2009/138/EC	R0340	0				
Letters of credit and guarantees other than under Article 96(2) of the Directive 2009/138/EC	R0350	0				
Supplementary members calls under first subparagraph of Article 96(3) of the Directive 2009/138/EC	R0360	0				
Supplementary members calls - other than under first subparagraph of Article 96(3) of the Directive 2009/138/EC	R0370	0				
Other ancillary own funds	R0390	0				
Total ancillary own funds	R0400	0			0	0
Available and eligible own funds						
Total available own funds to meet the SCR	R0500	9,314,330	9,314,330	0	0	0
Total available own funds to meet the MCR	R0510	9,314,330	9,314,330	0	0	0
Total eligible own funds to meet the SCR	R0540	9,314,330	9,314,330	0	0	0
Total eligible own funds to meet the MCR	R0550	9,314,330	9,314,330	0	0	0
SCR	R0580	1,593,430				
MCR	R0600	4,211,280				
Ratio of Eligible own funds to SCR	R0620	585%				
Ratio of Eligible own funds to MCR	R0640	221%				

Reconciliation reserve

		C0060
Reconciliation reserve		
Excess of assets over liabilities	R0700	9,314,330
Own shares (held directly and indirectly)	R0710	
Foreseeable dividends, distributions and charges	R0720	
Other basic own fund items	R0730	19,951,000
Adjustment for restricted own fund items in respect of matching adjustment portfolios and ring fenced funds	R0740	
Reconciliation reserve	R0760	-10,636,670
Expected profits		
Expected profits included in future premiums (EPIFP) - Life business	R0770	
Expected profits included in future premiums (EPIFP) - Non-life business	R0780	169,688
Total Expected profits included in future premiums (EPIFP)	R0790	169,688

S.25.01.21

Solvency Capital Requirement - for undertakings on Standard Formula

Market risk
 Counterparty default risk
 Life underwriting risk
 Health underwriting risk
 Non-life underwriting risk
 Diversification
 Intangible asset risk
Basic Solvency Capital Requirement

Calculation of Solvency Capital Requirement

Operational risk
 Loss-absorbing capacity of technical provisions
 Loss-absorbing capacity of deferred taxes
 Capital requirement for business operated in accordance with Art. 4 of Directive 2003/41/EC

Solvency capital requirement excluding capital add-on

Capital add-on already set

Solvency capital requirement

Other information on SCR

Capital requirement for duration-based equity risk sub-module
 Total amount of Notional Solvency Capital Requirement for remaining part
 Total amount of Notional Solvency Capital Requirements for ring fenced funds
 Total amount of Notional Solvency Capital Requirement for matching adjustment portfolios
 Diversification effects due to RFF nSCR aggregation for article 304

	Gross solvency capital requirement	USP	Simplifications
	C0110	C0090	C0100
R0010	985,521		
R0020	313,332		
R0030	-		
R0040	-		
R0050	665,463		
R0060	-	480,034	
R0070	-		
R0100	1,484,282		
	C0100		
R0130	109,148		
R0140	-		
R0150	-		
R0160	-		
R0200	1,593,430		
R0210	-		
R0220	1,593,430		
R0400	-		
R0410	-		
R0420	-		
R0430	-		
R0440	-		

S.28.01.01

Minimum Capital Requirement - Only life or only non-life insurance or reinsurance activity

Linear formula component for non-life insurance and reinsurance obligations

		MCR components
		C0010
MCRNL Result	R0010	572,864

Background information

		Background information	
		Net (of reinsurance/SPV) best estimate and TP calculated as a whole	Net (of reinsurance) written premiums in the last 12 months
		C0020	C0030
Medical expense insurance and proportional reinsurance	R0020	0	0
Income protection insurance and proportional reinsurance	R0030	0	0
Workers' compensation insurance and proportional reinsurance	R0040	0	0
Motor vehicle liability insurance and proportional reinsurance	R0050	0	0
Other motor insurance and proportional reinsurance	R0060	0	0
Marine, aviation and transport insurance and proportional reinsurance	R0070	886	0
Fire and other damage to property insurance and proportional reinsurance	R0080	1,779	0
General liability insurance and proportional reinsurance	R0090	0	0
Credit and suretyship insurance and proportional reinsurance	R0100	636,342	-10,981
Legal expenses insurance and proportional reinsurance	R0110	0	0
Assistance and proportional reinsurance	R0120	0	0
Miscellaneous financial loss insurance and proportional reinsurance	R0130	0	0
Non-proportional health reinsurance	R0140	0	0
Non-proportional casualty reinsurance	R0150	0	0
Non-proportional marine, aviation and transport reinsurance	R0160	0	0
Non-proportional property reinsurance	R0170	2,479,542	121

Linear formula component for life insurance and reinsurance obligations

		C0040
MCRL Result	R0200	

Total capital at risk for all life (re)insurance obligations

		Net (of reinsurance/SPV) best estimate and TP calculated as a whole	Net (of reinsurance/SPV) total capital at risk
		C0050	C0060
Obligations with profit participation - guaranteed benefits	R0210		
Obligations with profit participation - future discretionary benefits	R0220		
Index-linked and unit-linked insurance obligations	R0230		
Other life (re)insurance and health (re)insurance obligations	R0240		
Total capital at risk for all life (re)insurance obligations	R0250		

Overall MCR calculation

		C0070
Linear MCR	R0300	572,864
SCR	R0310	1,593,430
MCR cap	R0320	717,044
MCR floor	R0330	398,358
Combined MCR	R0340	572,864
Absolute floor of the MCR	R0350	4,211,280
Minimum Capital Requirement	R0400	4,211,280